



Squamish Nation New Protected Areas

A 2025 land-use agreement with the Province adds 20,000 hectares of land

Skwxwú7mesh Territory

More than 6,700 square kilometres of land form our territory, from Vancouver to Gibsons Landing and the area north of Howe Sound.

Sīiyamīin Cultural Sites

Smaller areas, identified for cultural and traditional use. Examples include rock shelters, mountain tops, creeks, or areas of old-growth cedar. Receive full protection from land and forestry activity.

Special Cultural Management Areas

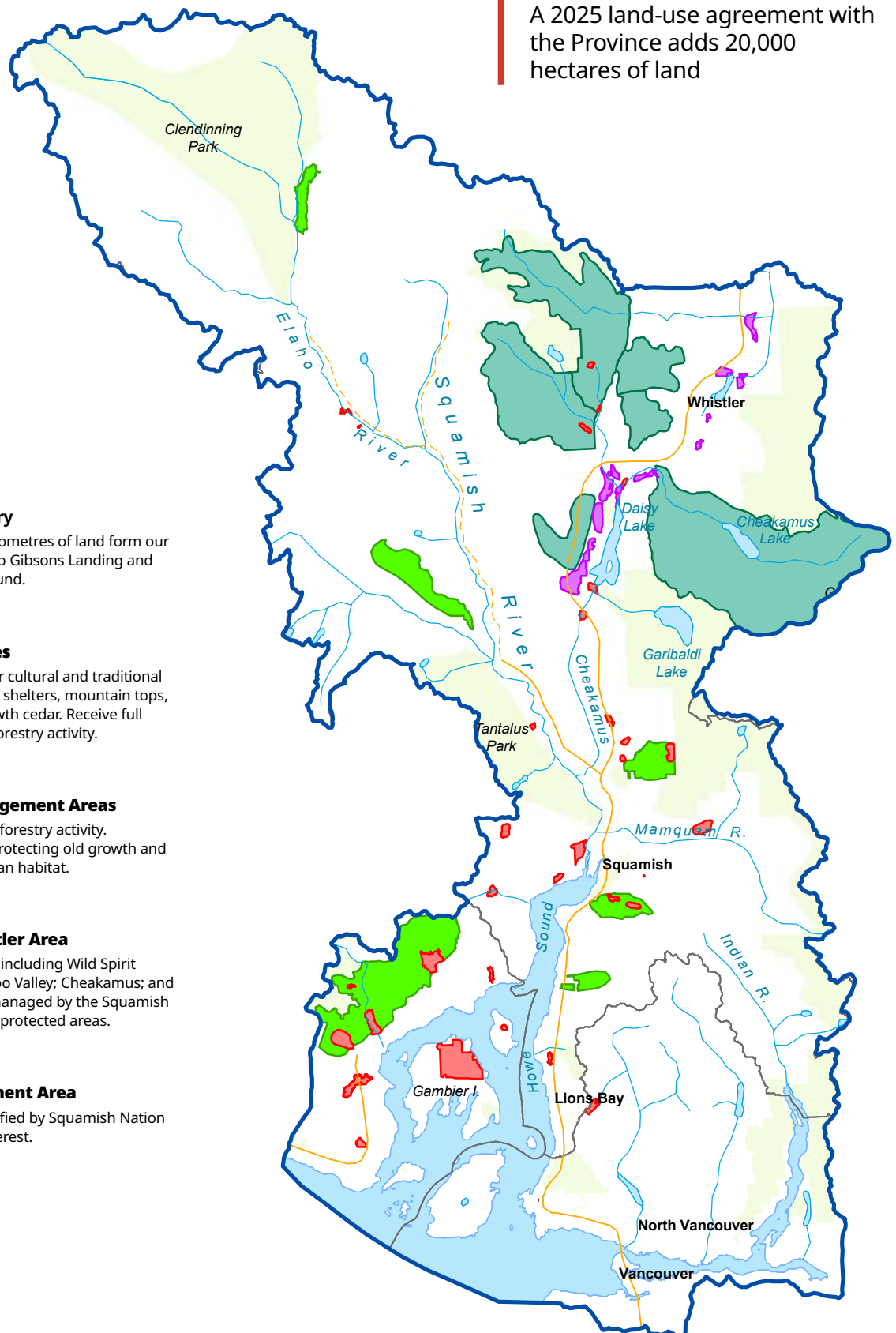
Larger areas with ongoing forestry activity. Management focuses on protecting old growth and cedar and important riparian habitat.

Nation Zones in Whistler Area

Areas with Nation interest, including Wild Spirit Places; Callaghan Valley; Soo Valley; Cheakamus; and Rainbow Lake. Will be co-managed by the Squamish Nation, including BC Parks protected areas.

Crown Land Development Area

Areas of Crown Land identified by Squamish Nation as having high value of interest.



1:650,000