



INTRODUCTION

The BC Maritime Employers Association (BCMEA) is pleased to announce a Call for Indigenous Artist to support a mural installation at the BCMEA Dispatch Centre in Vancouver. This initiative stems from the industry's commitment to economic reconciliation, shared environmental stewardship, and meaningful collaboration within the maritime community. The BCMEA is dedicated to honouring Indigenous heritage and promoting economic inclusivity in public spaces.

LAND ACKNOWLEDGEMENT

BCMEA acknowledges the Vancouver Dispatch Centre is located and operates within the traditional and unceded territories of the of the xʷməθkʷəy̓əm (Musqueam), Sḵw̓x̓wú7mesh (Squamish), and səliłwətał (Tsleil-Waututh) Nations.

OBJECTIVES

The BCMEA seeks an artist from Musqueam Indian Band, Squamish Nation, or Tsleil-Waututh Nation to design and install a mural for an external wall of the BCMEA Dispatch Centre. The mural aims to transform the wall into a symbol of unity, promoting inclusivity, well-being, and cultural safety. By honouring the Indigenous history embedded in the coastal land and waterways, the artwork seeks to resonate with BCMEA members, staff, and diverse labour force, reflecting shared values and cultural richness of the maritime community.

PROJECT BACKGROUND

Coastal First Nations people in British Columbia have a deep-rooted connection to the waters such as the Salish Sea, Fraser River, and Burrard Inlet, employing sophisticated maritime practices for trade and sustenance. Despite significant historical disruptions due to European contact and colonialism, Indigenous resilience and connection to B.C.'s waterways remains evident, with ongoing efforts to assert rights and contribute to sustainable practices. Today, B.C.'s waterfront continues to include Indigenous representation – comprising 10% of the workforce provincially. The BCMEA honours the legacy and contributions of Indigenous workers to B.C.'s waterfront and recognizes how integral they are to shape the maritime industry's future.

BCMEA DISPATCH CENTRE (MURAL SITE)

The BCMEA Dispatch Hall is a critical supplier of waterfront labour to ports throughout the Vancouver, North Shore, and Squamish regions. The Port of Vancouver is the most diversified port in North America and the busiest in Canada by far. As such, the the BCMEA's Dispatch Hall operations are critical to Canada's trade with the Asia Pacific Gateway.

Built in the late 1960s, the BC Maritime Employers Association owns the Dispatch Hall which is run by the BCMEA dispatch operations team. The International Longshore and Warehouse Union representatives, such as business agents, attend the Dispatch Hall site daily to represent their members and casuals during the dispatch process. The BCMEA Dispatch Hall is responsible for processing labour orders for terminal operations in Vancouver and Squamish areas and dispatching required personnel to the BCMEA's member-companies three times a day, 365 days a year. On average, approximately 1,000 people attend the BCMEA Dispatch Hall on a daily basis.

The Vancouver Dispatch Centre is located at 1430 Franklin Street in the City of Vancouver, two blocks south of the Vancouver Waterfront.

PROJECT DESCRIPTION & CONTEXT
SITE INFORMATION

- Location: 1430 Franklin Street, North Elevation side exterior wall of the Dispatch Centre building
- Mural area: 98.5 ft wide by 20 ft high (approx. 1970 sq ft), individual panel measurements approx. 18 ft wide by 20 ft high (8 panels total)

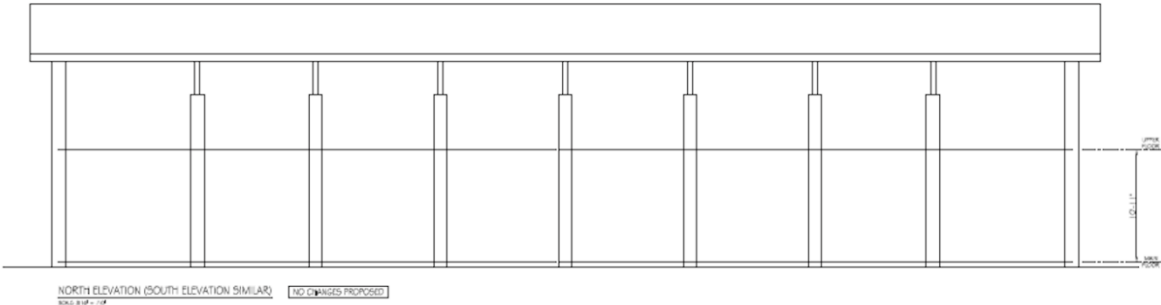


Figure 1. Blueprint of North Elevation side wall of Dispatch Centre building



Figure 2. Photo of the North Elevation side wall of Dispatch Centre building

MURAL INSTALLATION PROCESS

The selected artist will play a pivotal role in both the design and execution phases of the mural project. The chosen artist is required to:

- 1. Provide a comprehensive mural design** that aligns with the theme of “Celebrating Coastal Connections”. The theme offers broad inspiration for the mural and embodies the rich maritime history shared between the BC maritime industry and Indigenous communities. Artists are encouraged to interpret this theme creatively, with suggestions including but not limited to elements such as oceanic and coastal landscapes, traditional and modern watercraft, Indigenous flora and fauna, and a representation of the diverse community. It may also acknowledge the history and current economic interconnectedness of the relationship between the Waterfront industry, First Nations, and the community, as well as the importance and shared values of safety and environmental stewardship to these groups. The suggestions provided are not prescriptive; rather they serve as an inspiration, and artists are welcome to bring their unique interpretation and artistic vision to the project. The artwork should aim to embody the enduring cultural, ecological, and economic interconnectedness that defines our coastal territories, and the art style may be either free form or traditional Coast Salish.

2. The selected artist will work with the BCMEA’s project team to **develop their concept into a detailed design**. During this time, the artist will work closely with the project design team to ensure the artwork will meet all technical requirements.
3. **Assemble, lead, and actively participate in a dedicated “mural installation team”** of supporting artists and subcontractors, ensuring effective collaboration and timely project coordination.
4. **Engage with and report to the project committee regularly throughout the project's duration.** This includes coordination of an unveiling ceremony following mural completion.
5. Acknowledge that the mural installation will be documented by a videographer at regular intervals throughout the project duration. The selected artist and mural installation team must provide consent to being filmed and interviewed for the purpose of BCMEA’s documentation and promotion of the project.

DESIGN SUBMISSION GUIDELINE

FILE FORMATS AND REQUIREMENTS

Accepted File Formats for Final Artwork Submission

- Adobe Illustrator (.ai, .eps, .pdf) with any linked images embedded and fonts converted to outlines.
- Photoshop (.psd, .jpg, .tif) in high resolution (300dpi).
- The BCMEA will support converting artwork to acceptable formats, if needed.

LIFE EXPECTANCY OF ARTWORK

The mural is expected to last 10-15 years. In consideration of Vancouver’s varied climate, characterized by moderate temperatures and significant rainfall, the artist must prioritize longevity using weather-resistant materials.

COLOUR GUIDELINES

The Artwork can include the below industry standards for colour matching, however other colour schemes are welcomed.



PROJECT TIMELINE

- January 2024: Call for artists announced
- January-February 2024: Submission period opens
- March 2024: RFP closure
- March-April 2024: Artist selection review
- May 2024: Selected artist award notification
- June-August 2024: Mural development
- August-September 2024: Mural completion
- September 2024: Unveiling ceremony

BUDGET

Approx. \$50,000 - \$75,000 (negotiable), covering artist fees, supplies, materials, and mural installation team's labour. A payment schedule will be presented to the selected artist.

APPLICATION REQUIREMENTS

To apply for the BCMEA Dispatch Centre Mural project, please provide the following requested information:

- 1. Expression of Interest:**
 - a. Name, contact email, and telephone number.
 - b. Musqueam, Squamish, or Tsleil-Waututh affiliation (artist must be a member of one of these three Indigenous Nations).
 - c. Interest in the project.
- 2. Examples of Artistic Ability:**
 - a. Sample artwork and/or description of relevant experience (e.g. wall murals painted, and other relevant artistic experience of a similar scope).
- 3. Project Plan:**
 - a. Description of how the project will be managed successfully, including details of the mural installation team and contact information.
- 4. Artistic Submission:**
 - a. **Mural art design:** concept form, scaled down in accordance to the Design Submission Guidelines as noted above.
 - b. **Concept statement:** description of the art to your audience (up to a maximum of 300 words).

SUBMISSION CONTACT INFORMATION

Interested Indigenous artists are invited to submit the items listed under the **Application Requirements** section to: **Marissa Chan-Kent** at mchankent@bcmea.com. For questions about the submission requirements or process, please contact Marissa Chan-Kent.

SELECTION PROCESS

Submissions will be evaluated based on artistic excellence, relevance to the mural theme, experience working on similar projects, and strength of the artist's project plan. The volunteer Artist Selection Panel may include representatives from the BCMEA's Leadership, BCMEA Dispatch Centre Staff, BCMEA Membership, ILWU Leadership and an Indigenous BC Nation (non-Musqueam, Squamish or Tsleil-Waututh).

The BCMEA thanks all artists for their submissions, appreciating their time, effort, and interest in this project. The BCMEA reserves the right to, in its sole discretion to:

- 1. Modify the terms of the RFP before selection with notice to proponents;***
- 2. Cancel the RFP with notice to proponents;***
- 3. Select or not select an artist from the submissions received.***

ABOUT BCMEA

The British Columbia Maritime Employers Association is a voluntary industry association representing 49 of B.C.'s waterfront employers, and by extension, over 9,400 people who power B.C.'s ports. The BCMEA's membership are key drivers of B.C. and Canada's economies, operating 24 hours a day, seven days a week. Our members are responsible for safely handling over \$180 billion worth of cargo annually, comprising 16% of Canada's total traded goods – serving as Canada's vital trade link to the world.

The BCMEA works to optimize its members' operations by providing expertise in labour relations, labour dispatch, safety, training and recruitment of the waterfront workforce, collective bargaining, data analytics, and human resources. Its members include ship owners and agents, stevedores, and terminal operators working out of ports from Victoria up to the Alaska border.

The BCMEA and its membership are vital components in the supply chain that ensure Canada's resilient and competitive connection to the rest of the world. Where ship meets shore, the BCMEA members are responsible for the safe movement of cargo and passengers through Canada's West Coast ports.

