



Environmental Update September 25, 2019

- FortisBC Eagle Mountain Pipeline (EGP) are planning to build a buried pipeline to move natural gas from a starting point north of Coquitlam to an end point at Woodfibre.
- Woodfibre LNG (WLNG) is planning to build a large industrial facility (export terminal) where gas would be condensed into liquid natural gas (LNG) and loaded onto tankers.
- Both companies must comply with additional environmental conditions from Squamish Nation and provincial / federal agencies before construction can begin.

Environmental Conditions of Approval

- Squamish Nation's approval of the projects included environmental conditions that must be met. These created significant changes to project design.
- Additional environmental conditions were issued by provincial and federal governments.
- *Examples* of Squamish Nation conditions include:
 - Abandoning sea water cooling, due to concerns of large water intakes and discharge of chlorine.
 - No machinery or digging in Skwelwil'em (Squamish River estuary). Tunneling will be used instead.
 - Gas compressor stations not permitted near any Squamish Nation reserves.
 - Ensuring the project never switches from LNG to oil shipments.
 - No project expansions without Squamish Nation approval.
 - Providing access for Squamish Nation members through security-restricted areas and minimizing disruption where pipeline work is near cultural sites.
 - No bunker fueling (ship-to-ship refuelling) of tankers permitted within Squamish Nation territory.
 - Squamish Nation approval authority for environmental management and follow-up monitoring plans for construction and operations phases – this will include emergency prevention and response plans for operations.
 - Supporting additional research for Howe Sound marine life.
 - Accountability for both companies to fulfill all voluntary environmental commitments (other governments do not monitor voluntary commitments).

QUICK FACTS

- WLNG and EGP project areas are shown on the next page.
- The pipeline will be about 50km long and mostly follows an existing gas pipeline built in 1990.
- The export terminal will involve a large facility both on land and on a floating storage/offloading unit (called "FSO").
- Approximately one LNG tanker per week will come in and out of Howe Sound for loading.
- Construction of the export terminal is expected to start in the first half of 2020, and pipeline construction is expected to start during the summer of 2020.
- Newsletter updates will be issued regularly to keep members up to date on these two projects.
- Updates will include general background information, and current details of environmental planning or project milestones.
- If you would like more details, please see contact lists at the end of this newsletter.

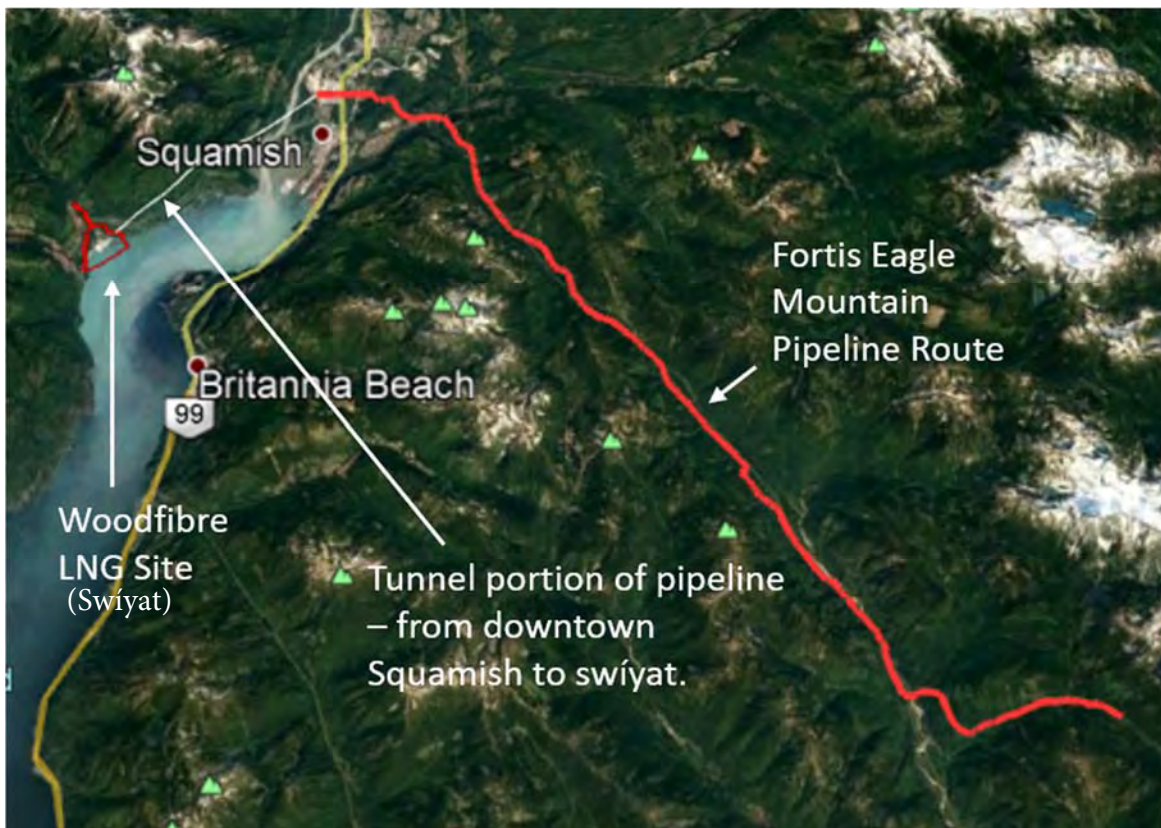


Wondering about LNG?

Liquid Natural Gas is known as LNG. There are useful links online that help answer many questions people have about LNG and how it is different from oil:

- LNG safety demonstration | FortisBC: [LNG safety demonstration](#)
- What is LNG | FortisBC: [What is LNG?](#)
- LNG basics | FortisBC: [LNG basics](#)
- LNG safety | FortisBC: [LNG safety](#)

Pipeline Route and Woodfibre LNG Location (swíyat)





Project Update – September 25, 2019

- **Woodfibre LNG**
 - WLNG are exploring options for worker housing. One of the options includes a floating barge-based construction camp at swíyat. This would decrease daily marine traffic and avoid housing workers in Squamish or at Britannia Beach. This option remains under review – Woodfibre LNG has not formally decided whether it is an achievable option.
 - The Squamish Nation – Woodfibre LNG Environmental Working Group has been working hard to improve a series of “Environmental Management Plans” that the company must prepare before construction.
 - Most of these plans must be approved by Squamish Nation’s representatives on the Working Group before construction can start.
 - The pre-construction Environmental Management Plans cover many topics. For example:
 - Monitoring herring and juvenile salmon around swíyat.
 - Stopping marine construction when whales are near enough to be disturbed or injured.
 - Preventing the spread of invasive plants.
 - Avoiding conflict from project traffic (either marine traffic or road traffic).
 - Ensuring the wake from boat traffic does not disturb shoreline areas (environmental or human use disturbances).
 - Adding the Skwxwú7mesh Sníchim (Squamish language) into the Environmental Management Plans.

- **FortisBC**
 - FortisBC is busy with a geotechnical survey program (drilling to confirm rock and soil conditions) to fine-tune the pipeline route. This program will continue through the fall. Most of the work is in the Indian River area, but it also includes drill-holes in the Stawamus River watershed, and in town.
 - FortisBC is also investigating whether they can change the compressor station location from Mt. Mulligan to swíyat (Woodfibre). This has been under investigation for several months. This would be good news, but FortisBC has more engineering work to do to see if this is possible.
 - The Squamish Nation – FortisBC Environmental Working Group meets approximately once per month.
 - Pipeline construction will start later than Woodfibre LNG facility construction. The Environmental Working Group expects to start detailed discussion of Environmental Management Plans later this year and into 2020.



Contacts

Squamish Nation appointed technical representatives to the two Environmental Working Groups:

Tyler Gray and **Bridget Dunne** on contract from PGL Environmental Consultants as technical leads and project managers. Both are biologists.

Adrienne Charlie hired by Squamish Nation and PGL as the Community Outreach Coordinator for the project.

- This role provides cultural, technical, and administrative support with implementing the environmental conditions.
- This role will also be one way in which Squamish Nation leadership is reporting to and listening to membership about environmental and cultural concerns with the project.

Squamish Nation's **IBA Implementation Committee** appointed an **Environmental Subcommittee** including a mix of department staff and elected councillors. The subcommittee is an advisory group that oversees the progress of the Environmental Working Groups. **Deanna Lewis** is the Chair of the subcommittee.

If you have environmental questions or concerns about Woodfibre LNG or the related FortisBC pipeline, please contact Tyler Gray (tgray@pggroup.com or 250 940 0768), Councillor Deanna Lewis (Deanna_lewis@squamish.net), or Adrienne Charlie (acharlie@pggroup.com).