



Woodfibre LNG and FortisBC EGP Projects: Update from Squamish Nation's Environmental Team 04 May 2020

Since June 2019, Squamish Nation's (SN) environmental team has been posting monthly project updates through the community newsletters. In this edition:

- Page 2 – FortisBC Eagle Mountain Pipeline (EGP) project update
- Page 3 – Woodfibre LNG (WLNG) project update
- Page 4 – Using community feedback
- Page 5 – Squamish Nation contacts

Background

- FortisBC's EGP Project is a buried pipeline planned to move natural gas from a starting point north of Coquitlam to an end point at Woodfibre.
- WLNG are planning to build a large industrial facility (export terminal) where gas would be condensed into liquid natural gas (LNG) and loaded onto carriers for international markets.
- WLNG must comply with environmental conditions from Squamish Nation, provincial and federal agencies before the start of construction, and an additional set of conditions before the launch of operations.
- FortisBC must comply with environmental conditions from Squamish Nation and the provincial agency before the start of construction, and an additional set of conditions before the launch of operations.
- SN's Rights and Title Department is responsible for overseeing the environmental conditions and Environmental Team.

Quick Facts

- EGP project amendment areas are shown on page 3.
- The pipeline will be about 50km long and mostly follows an existing gas pipeline built in 1990.
- The export terminal will involve a large facility on land and a floating storage/offloading unit (called "FSO").
- Approximately three LNG carriers per month will come in and out of Howe Sound for loading.
- Approximate construction date for both WLNG and FortisBC is summer 2021 at the earliest.
- Regular newsletter updates will include general background information and current details of environmental planning.

If you have suggested topics for future newsletters, please let us know! Contact info is on page 5.



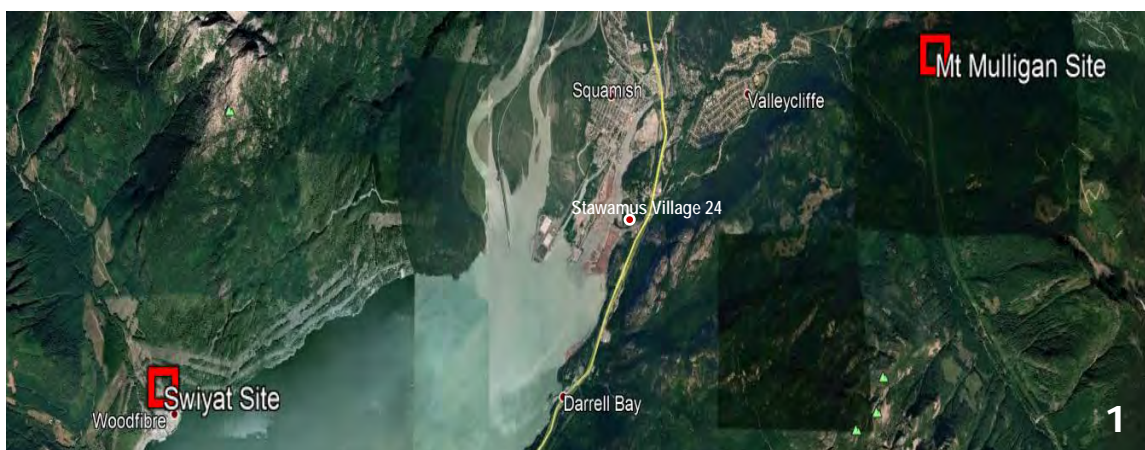
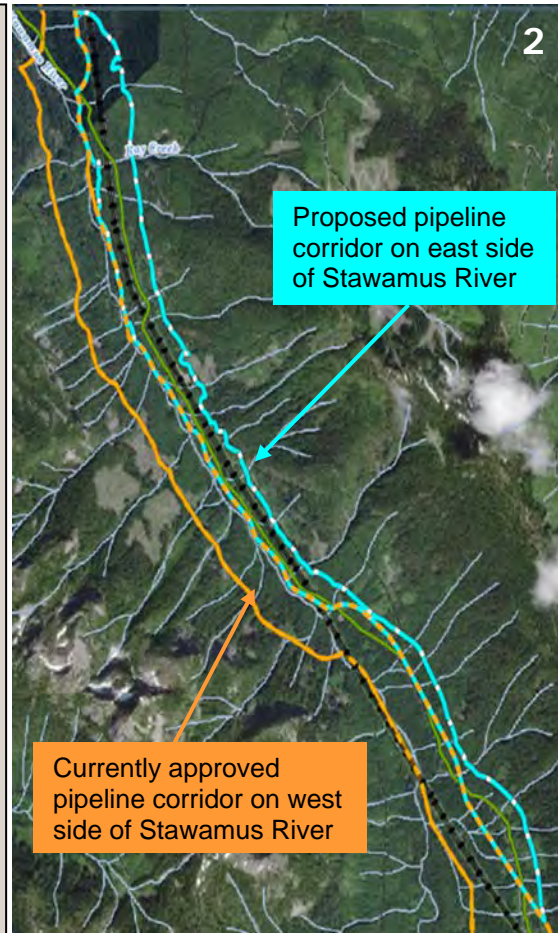
FortisBC EGP Project Update

Pipeline Amendment Application

FortisBC have moved forward with final details on a proposed project change. Approval is required by both the BC Environmental Assessment Office (EAO) and by Squamish Nation. The amendment includes:

1. Changing the location of a compressor station from Mt. Mulligan (southeast of Valleycliffe) to on-site at *swiyat*. This is the same compressor station that originally would have been near Yekwaupsum 18 but was relocated to Mt. Mulligan as part of Squamish Nation's environmental conditions.
2. Move the pipeline from west side to east side of Stawamus River. (For those who know the area, the existing FortisBC gas line that was constructed in 1990 is on the east side of the river.)

Two other changes would occur outside of SN territory.



So far, FortisBC has only submitted the project description. Environmental reports are expected in the summer, and there will be a comment period before a decision in autumn. More details can be found at www.projects.eao.gov.bc.ca (and searching for "Eagle Mountain").



Woodfibre LNG Project Delayed to 2021

In late March 2020, WLNG announced that construction will be postponed until Summer 2021. The Project has requested that the EAO extend the date by which their certificate states they must have started construction. It is currently set for October 2020.

- The Squamish Nation Environmental Assessment Agreement (SNEAA) does not have a construction start date attributed to it, so there is no requirement for an update to this agreement.

FLOATEL UPDATE

The WLNG Project is currently approved to house out of town construction workforce in local rental housing. In October 2019, WLNG applied for permission to house construction workers in a floating work camp (floating hotel = “floatel”) and a walkway connecting the camp to the construction site.

To use a floating camp, WLNG will require approval from SN, the provincial government (Environmental Assessment Office) and the federal government (Impact Assessment Agency of Canada).

WLNG have been asked for more information about the proposal – including environmental protection, worker health, and how the company will manage transportation of out-of-town workers to and from the floating camp. The responses are expected in late spring or summer, and regulatory decisions in late summer or early fall.



Overview

- Up to 600 people on board
- Intended to house the **out-of-town workers**, who will be flown back home between shifts
- 125m long, 32m wide, 22m high
- Two new mooring dolphins (each with 3 batter piles bundled together)*
- No propeller (barge-based, so would be towed in and out)
- New pathway through 2nd growth forest (~250m) for workers to walk to construction site
- All waste taken for off-site disposal
- Removed after construction (~ 2025)

If you have questions or comments about the floating camp, please contact Rights and Title or the environmental team on page 5.

*For clarity, each mooring dolphin will consist of 3 batter piles each (total of 6 piles). A batter pile is a pile installed at an angle from the others that, in the case of dolphins, come together at the top, like a cone.



Using Community Feedback in the Environmental Conditions

- Community feedback during project engagement was used to develop the environmental conditions and continues to guide how the conditions are implemented.
- In the last newsletter, we explained how Squamish Nation used the community feedback theme of “proponent accountability”.
- Another common theme in developing the conditions was the recovery of Atl’ka7sem (Howe Sound), and the concerns for marine mammals (especially food supply and noise).

Marine Mammal Management

- During construction, WLNG is required to follow a noise monitoring plan to ensure things like pile driving and vessel traffic will be quiet enough to avoid injury or disruption to marine mammals. Squamish Nation has approval authority for this plan and will ensure it meets the best industry standards.
- During operations, WLNG must monitor vessel noise, vessel speed, and marine mammal movements in Howe Sound. The scope of this monitoring will be developed with Squamish Nation. Any data from the WLNG monitoring work will also be shared with Squamish Nation to improve overall management of cumulative noise levels in Howe Sound.
- Herring and salmon are important food sources for marine mammals. Marine fish and fish habitat protections are another category of environmental conditions that will be summarized in a future newsletter.
- Squamish Nation conditions require long-term monitoring on compliance with protection measures, and their effectiveness.
- The results of environmental monitoring will be reviewed on an annual basis and will be used to inform and refine the mitigation measures. If impact thresholds are exceeded (or have the potential to be exceeded), then construction/operation will be halted, and an adaptive management strategy will be implemented by Woodfibre.
- If you would like to hear more about marine mammal conditions, please connect with one of the individuals listed on the next page.



Squamish Nation Environmental Team Contacts:

SN's Environmental Team includes technical representatives (the Environmental Working Group) and supporting personnel. The team representatives report to the Rights and Title Department. The Environmental Working Group also liaises with a sub-committee of the IBA Implementation Committee.

If you have questions or concerns about Woodfibre LNG or the related FortisBC pipeline, please feel free to contact any of the representatives to the WLNG and FortisBC EGP Environmental Working Groups below.

Environmental Working Group Representatives:

Tyler Gray and **Bridget Dunne** on contract from PGL Environmental Consultants as technical leads and project managers. Both are biologists.

Tyler Gray (tgray@pggroup.com or 250 940 0768)

Bridget Dunne (bdunne@pggroup.com or 604-895-7659)

Environmental Working Group Community Outreach Coordinator:

Adrienne Charlie hired by SN and PGL as the Community Outreach Coordinator on both projects.

- This role provides cultural, technical, and administrative support with implementing the environmental conditions.
- This role will also be one way in which SN leadership is reporting to, and listening to, membership about environmental and cultural concerns with the projects.

Adrienne Charlie (acharlie@pggroup.com)

Adrienne Charlie is seeking input from membership on the EGP and WLNG Projects. If you have ideas to share or concerns to raise regarding environmental, safety, or cultural impacts please connect with her.

During COVID-19, she is available to answer emails, and set up video conferences with individuals or groups at your convenience.

Rights and Title Director:

Peter Baker (peter_baker@squamish.net or 604-982-0510)

IBA Environmental Subcommittee Chair:

Councillor Deanna Lewis (deanna_lewis@squamish.net)