



Proposed area for new forestry access dock behind Swiyát (Woodfibre)

WOODFIBRE LNG AND FORTIS EAGLE MOUNTAIN GAS PIPELINE PROJECTS:

June 2022 Update from Skwxwú7mesh Úxwumixw (Squamish Nation's)
Environmental Team

WHAT'S NEW?

In this newsletter:

- **Upcoming Activities**
- **Ch'émesh (Herring Roe) Surveys**
- **FortisBC - Amendments for Environmental Approvals**
- **Environmental Management and Inexwantas (Monitoring) Plans**

Concerns about environmental, cultural and socio-economic impacts?

Skwxwú7mesh Úxwumixw (Squamish Nation) membership are encouraged to forward comments, concerns, and questions to Community Outreach Coordinator, Whitney Joseph at **swiyat@squamish.net**. You can also call or text Whitney at **778-966-1117**.

- ◆ This update is on environmental regulation. All Skwxwú7mesh Úxwumixw members and businesses seeking employment or business opportunities for the project are encouraged to contact either:

Skwxwú7mesh Úxwumixw
Education, Employment &
Training Department
(Paul_wick@squamish.net)

or

Nch'kay Development
Corp
(Jody_antone@squamish.net)

- ◆ **Has your cultural use on our traditional territories been impacted in ANY way by the current construction activities that are taking place? Please report immediately Whitney Joseph at 778-966-1117**

NEWSLETTERS

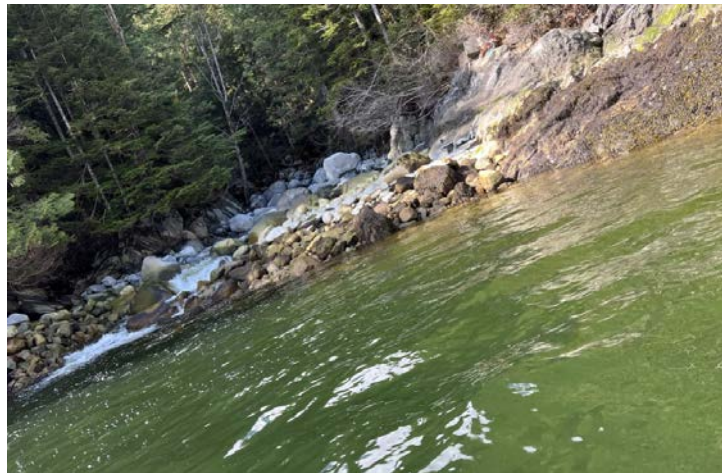
These project update newsletters have been on reduced frequency in 2021 and early 2022, as a lot of the expected pre-construction regulatory work was pushed back. With both FortisBC and Woodfibre LNG now striving for a 2023 construction start, the pace of Skwxwú7mesh Uxwumixw (Squamish Nation's) regulatory work and community outreach will be higher. We will aim to circulate monthly newsletters starting in June.

If you have any questions or comments on information that would be helpful in these newsletters, please get in touch with Whitney Joseph: swiyat@squamish.net

CH'ÉMESH (HERRING ROE) SURVEYS WITH WOODFIBRE LNG

On March 20, April 4 and April 28, 2022, Woodfibre LNG conducted Ínexwantas (monitoring) for ch'ém esh (Herring Roe) at various locations throughout Atl'ka7sem (Howe Sound) including Swiyát (Woodfibre), Foulger Creek, Kw'émkw'em (Defence Island), Enwilh spalhxn (Furry Creek), and Shishayu7áy (Britannia Beach). A Skwxwú7mesh Uxwumixw (Squamish Nation) outreach coordinator, an aquatic biologist and a vessel operator collaborated to collect samples of ch'ém esh on rockweed kelp under a Department of Fisheries and Oceans Scientific Collection Permit. The March 20 and April 4 trips were not successful in finding ch'ém esh. However, through communication with staff from Stá7mes school whose students had been observing slhawt' (herring) spawning Skwxwú7mesh Uxwumixw asked Woodfibre LNG to check again. The Skwxwú7mesh Uxwumixw Environmental Subcommittee is grateful to Stá7mes school and Cultural Journeys for sharing their observations. As a result, Woodfibre LNG successfully located ch'ém esh for sampling at Swiyát, Foulger Creek and in Mámxwem (Mamquam) Blind Channel on April 28, 2022. The crew did not observe ch'ém esh at the Kw'émkw'em, Enwilh spalhxn or Shishayu7áy.

The collection of ch'ém esh is part of the Seafood Ínexwantas Program to support the Woodfibre LNG Project. Other types of seafood include lhémkw'a (English Sole) and ayx (Dungeness Crab), which were collected in 2021, and will continue to be sampled during and after project construction. The purpose of the Seafood Ínexwantas Program is to monitor contaminant levels during the construction and operation phases of the Woodfibre project. Samples of ayx leg meat, ayx mustard (hepatopancreas), lhémkw'a meat, and ch'ém esh are collected before, during, and after project construction for contaminant analysis. When results are available later in 2022 we will provide a summary and whether there are any risks to consuming seafood from these areas.



Mouth of Foulger Creek where ch'ém esh was collected for sampling



Proposed camp locations (Lafarge Sites)

FORTISBC—AMENDMENTS FOR ENVIRONMENTAL APPROVALS

If you've been reading local press or previous newsletters you may have seen several articles about FortisBC applying to amend the environmental approvals from Skwxwú7mesh Uxwumixw (Squamish Nation) Environmental Assessment Agreement and from the BC Environmental Assessment Office (the Environmental Assessment Certificate).

So far, FortisBC has received approval for one amendment, and two other amendments are under review.

#1. Routing updates and relocate the new compressor station. This was the most substantial of the three applications and was approved by Skwxwú7mesh Uxwumixw in January 2022.

#2. Resolving the location and the size of the work camp. The location under consideration is southeast of Quest University, for up to 600 workers. To be clear, Fortis already has approval to build a worker camp somewhere, the amendment reflects more specific details, that were not in place during initial approval in 2015. Regulatory decision from Skwxwú7mesh Uxwumixw and BC are expected in autumn 2022.

#3. Changing the pipeline route to allow construction in a Siiyamín ta Skwxwú7mesh (Squamish Nation Cultural Site) near Selílwit Staḵw (Indian River). At least in principle, this is being done with support from Skwxwú7mesh Uxwumixw. The Siiyamín ta Skwxwú7mesh already has a road and pipeline running through it, and there is opportunity to construct the new pipeline along the same cleared route. The initial option to go around the site may result in more overall impacts. Due diligence is ongoing and this change cannot be made without Skwxwú7mesh Uxwumixw approval. Decisions are expected in late summer or early autumn 2022.

Finally, there has been recent press about Fortis twinning the pipeline section through the 9km tunnel from downtown Skwxwú7mesh Uxwumixw to Woodfibre LNG. This is an emerging topic and we are reviewing FortisBC's proposal. The tunnel is large enough to add a twin pipeline, so this does not mean more natural gas or a bigger footprint, but would mean more construction materials created and about a month longer for overall construction timing. The main reason for the change is that doing future maintenance in a tunnel is more complicated than for a traditional pipeline, so doing extra work now might make things much easier later. This change does not allow FortisBC to expand the project, because any expansion (more gas being transported) is prohibited without Skwxwú7mesh Uxwumixw approval.

ENVIRONMENTAL MANAGEMENT AND MONITORING PLANS

When a projects under Environmental Assessment, it is common for the proponent to review environmental concerns at a big-picture level. Commitments are often made to fine-tune activities in Environmental Management and Inexwantas (Monitoring) Plans closer to construction when detailed project design is complete. These deferred plans are a huge part of the environmental planning process. Plan development, however, is not well regulated. Consequently, Skwxwú7mesh Uxwumixw (Squamish Nation) conditions of approval for Woodfibre LNG and FortisBC require that most of these plans are subject to Skwxwú7mesh Uxwumixw written approval prior to construction. This condition is one way in which Skwxwú7mesh Uxwumixw is holding proponents accountable for promises made, whether promises were about a way work would be conducted, or the absence of lasting environmental impacts.

At a very general level, Environmental Management and Inexwantas Plans should give project specific details on:

1. The actions that will be taken to reduce or avoid environmental impacts (mitigation measures and implementation details)
2. How to confirm that environmental mitigation measures are being followed (compliance Inexwantas, chain-of-command, reporting)
3. How to confirm if those measures had the expected outcome (effectiveness Inexwantas)
4. Back-up plans in the event environmental impacts were more than what was permitted (adaptive management)

In this case, “environmental impact” is extremely broad. In addition to things like grizzly bear habitat or water quality, it also includes impacts on things like community services, back country access, and Skwxwú7mesh Uxwumixw rights. Both FortisBC and Woodfibre LNG have also agreed to include significant usage of Skwxwú7mesh Uxwumixw language (Skwxwú7mesh sníchim).

Roughly 20 Plans require Skwxwú7mesh Uxwumixw approval. This spring, we have been working with FortisBC’s environmental team on many of the priority Plans required before construction. This is a huge amount of work. We anticipate similar engagement ramping up with Woodfibre LNG later in 2022.



Current image of landfill at Swiyát, April 2022.

UPCOMING ACTIVITIES: WOODFIBRE LNG AND FORTISBC

As pre-construction works begin to ramp up you may notice some of the following activities taking place:

- ◆ Closure of the landfill at Woodfibre LNG, still active following pulp and paper mill days
- ◆ Fortis BC will be replacing a bridge over Stá7mes (Stawamus) River along the Stá7mes-Indian Main FSR. This will result in some road closures to access upper Stá7mes River watershed in autumn 2022.