



South of *Swiyát*, near where the proposed floating camp would be moored for three years. June 3, 2021.

WOODFIBRE LNG AND FORTIS EAGLE MOUNTAIN PIPELINE PROJECTS:

Update from Squamish Nation's Environmental Team

SQUAMISH NATION ENVIRONMENTAL TEAM

Curious how Squamish Nation oversees the environmental conditions of approval?

Through the Rights and Title Department, the Nation has established a project **Environmental Subcommittee**. The Subcommittee members participate on technical working groups, undertake community outreach and communications, work between Squamish Nation departments and Council when Squamish Nation regulatory decisions are necessary, and collaborate with other governments (provincial and federal).

Currently, Environmental Subcommittee members are:

- Ray Natraoro (Cultural and Technical Manager, R&T Department)
- Kathleen Edwards (Environmental Manager, R&T Department)
- Elizabeth Ross (Community Outreach Coordinator)
- Stephanie Louie (Technical Support, PGL Environmental Consultants)
- Bridget Dunne (Project Management and Technical Support, PGL)
- Tyler Gray (Project Management and Technical Support, PGL)

The Subcommittee works as needed with subject matter experts (archaeology, cultural protection, biologists, engineers, etc.) working on behalf of Squamish Nation.

Concerns about environmental or cultural impacts? Want to participate in Squamish Nation's environmental conditions?

Squamish Nation membership are encouraged to forward comments, concerns, and questions to Community Outreach Coordinator, Elizabeth Ross at swiyat@squamish.net. You can also call or text Elizabeth at **778-966-1117**.

Interested in employment, training, or benefits ?

- ♦ Woodfibre LNG (WLNG) is anticipating a Final Investment Decision (FID) is autumn 2021.
- ♦ All Squamish Nation members and businesses seeking employment or business opportunities for the project are encouraged to contact either the Squamish Nation Education, Employment & Training department or Nch'Kay Development Corp. (NDC)

FORTIS BC: PIPELINE AND COMPRESSOR STATION SAFETY

Over the last couple of months we have heard questions from members about the safety of the pipeline and compressor station. Some maps with “damage radius” areas have been circulated by community groups.

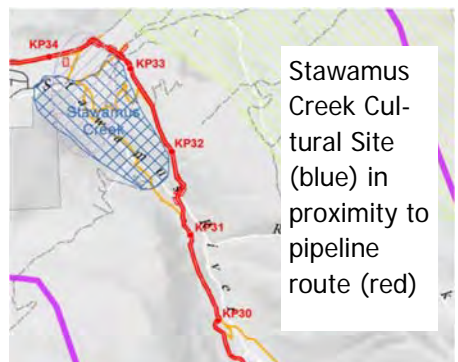
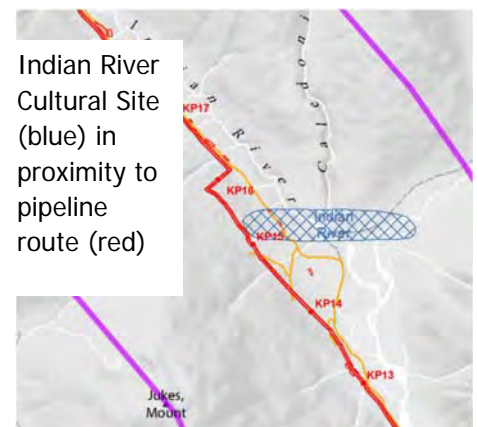
- What happens if there is an explosion?
- If there is a leak, will evacuations be necessary? If so, what is a possible evacuation zone?
- What areas are at risk of damage or injury? Is Yewkaupsum at risk?

These questions have been important issues for Squamish Nation since the pipeline evaluation started in 2015. We met with Fortis in May 2021 to review all of the things the company will do to prevent leaks, fires, or explosions. It was helpful information (we will include key points in a future newsletter), but are still working towards specific answers to the “what if…” scenarios.

In the short-term, we are reviewing the Fortis emergency response plans during the construction phase. More information will be provided to Squamish Nation as it becomes available.

CULTURAL SITES ALONG EAGLE MOUNTAIN PIPELINE ROUTE

- There are two *Síiyámin ta Skwxwú7mesh* - Squamish Nation Cultural Sites right beside the pipeline route: the Indian River Cultural Site and the Stawamus Creek Cultural Site.
- A Squamish Nation condition of approval is to agree on a plan to minimize impacts to the *Síiyámin ta Skwxwú7mesh*.
- Discussions are ongoing about construction timing, setback distance, noise issues, road closures, and extra precautions for forest fires.
- There is still room for input on how these *Síiyámin ta Skwxwú7mesh* will be protected from disturbance during construction:
 - Do you or your family members utilize either or both these sites?
 - Do you have information about past uses of these sites?
 - Do you have opinions or concerns about how construction near these sites might interfere with Squamish Nation rights and culture?



Please forward comments, input, questions and any information about the sites to Community Outreach Coordinator, Elizabeth Ross via **phone call/text 778-966-1117** or **email: swiyat@squamish.net**.

STATUS UPDATES: WORKER CAMPS

Woodfibre LNG

- The company has requested approval for up to 600 workers to live aboard a barge-based camp (“floatel”) near *Swiyát*, for about 3 years.
- Squamish Nation would need to approve adding the floatel camp.
- This camp application has been ongoing since 2019. WLNG have been asked for more information about how workers would travel to, from, and within the local community. It should be resolved by late 2021.

Fortis (Pipeline)

- Current project approvals allow a construction camp for roughly 600 workers. Fortis has been paring down from a long list of possible locations to a short-list of preferences.
- Squamish Nation’s environmental team has been in discussion with Fortis about locations.
- Fortis is also consulting with the general Sea to Sky community.
- Updates to follow as new information becomes available.

Our focus for camp details are to ensure sensible locations, small environmental footprint, and measures that will minimize conflict with Squamish Nation members, or Squamish Nation rights. If you have questions or concerns please get in touch!

MEDICINAL AND FOOD PLANTS

In early June, staff from Rights and Title and the Environmental Subcommittee conducted a survey of the clearing boundaries for the WLNG project at *Swiyát*. We wanted to know if the areas to be cleared had plants that should be harvested or transplanted for Squamish Nation use. Most of the WLNG project area is already cleared due to the long-term industrial use. A lot of the remaining clearing is just invasive plants and alders, but there is some cedar bark that will be designated for harvest prior to machine clearing.

Along the FortisBC pipeline route, there is a much higher volume of foods and medicines that could be harvested! We have done some high level inventory work of what is available in 2020 and 2021.



Yetwánaý- Salmonberries

If the pipeline proceeds to construction in 2022, clearing will occur in segments through 2024. We intend to ramp up efforts for salvage or harvest, in line with construction timing. If you would like to know more about this topic or would like to be involved, please get in touch.



Ch'átiyaý - Devil's Club

SWIYÁT: FOOD SAFETY AND PAST CONTAMINATION

- Industry has NOT been kind to Howe Sound in the past. For many years, pollution poisoned the foods that have always sustained *Skwxwú7mesh Úxwumixw*.
- The Woodfibre LNG site (*Swiyát*) still has contaminated soil on land and in the sub-tidal area, left over from the pulp and paper operations. Sampling about 5 years ago suggested fish and shellfish from waters near *Swiyát* are safe to eat, but we need more data.
- In July, Squamish Nation environmental and cultural team members will participate in sampling of crab and flatfish from the site, to submit for laboratory testing and determine if food from *Swiyát* is safe for consumption. We will pass along information when it is available.
- In 2022, we are working with WLNG for a larger program for Squamish Nation members to harvest herring roe from areas near *Swiyát* and further away. The roe will also be sent for laboratory testing.



Slhawt'- herring



Ch'émesh- herring roe



Ay̓x - crab



Lhémkw'a- Sole