



Woodfibre LNG and FortisBC EGP Projects: Update from Squamish Nation's Environmental Team 12 June 2020

Since June 2019, Squamish Nation's (SN) environmental team has been posting monthly project updates through the community newsletters. In this edition:

- Page 2 – FortisBC Eagle Mountain Pipeline (EGP) project update
- Page 3 – Woodfibre LNG (WLNG) project update
- Page 4 – Using community feedback: Mill Creek and salmon protection
- Page 5 – Squamish Nation contacts

Background

- FortisBC's EGP Project is a buried pipeline planned to move natural gas from a starting point north of Coquitlam to an end point at Woodfibre.
- WLNG are planning to build an industrial facility (export terminal) where gas would be condensed into liquid natural gas (LNG) and loaded onto carriers for international markets.
- WLNG must comply with environmental conditions from Squamish Nation, provincial and federal agencies before the start of construction, and an additional set of conditions before the launch of operations.
- FortisBC must comply with environmental conditions from Squamish Nation and the provincial agency before the start of construction, and an additional set of conditions before the launch of operations.

Quick Facts

- EGP project amendment areas are shown on page 2.
- The buried pipeline will be about 50km long and mostly follows an existing gas pipeline built in 1990.
- The export terminal will involve a large facility on land and a floating storage/offloading unit (called "FSO").
- Approximately three LNG carriers per month will come in and out of Howe Sound for loading.
- Approximate construction date for both WLNG and FortisBC is summer 2021 at the earliest.
- WLNG is the first LNG project in BC to commit to using hydroelectricity for power, reducing emissions by 85%.

SN's Rights and Title Department is responsible for overseeing the environmental conditions and Environmental Team. In general, these newsletters from the Environmental Team focus on the environmental conditions related to regulatory updates. The Environmental Working Group also liaises with an Environmental Subcommittee of the IBA Implementation Committee.

For these contacts and more, please see page 5.

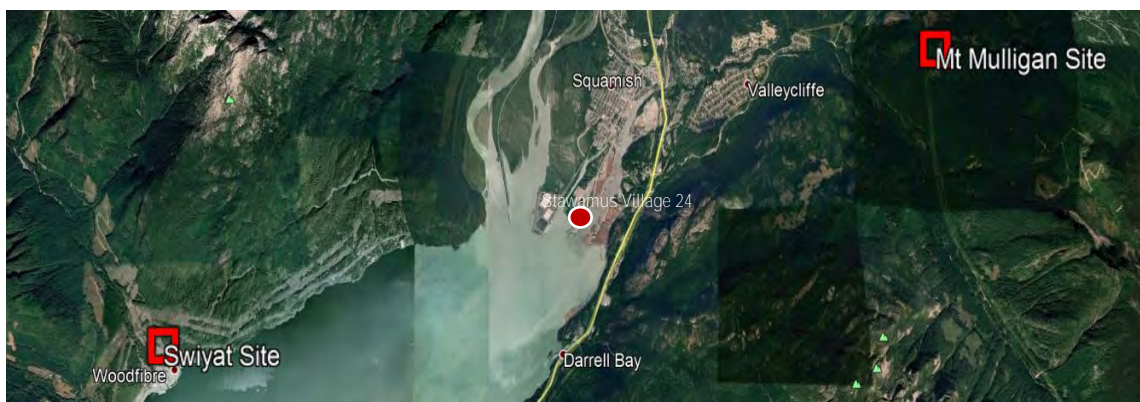
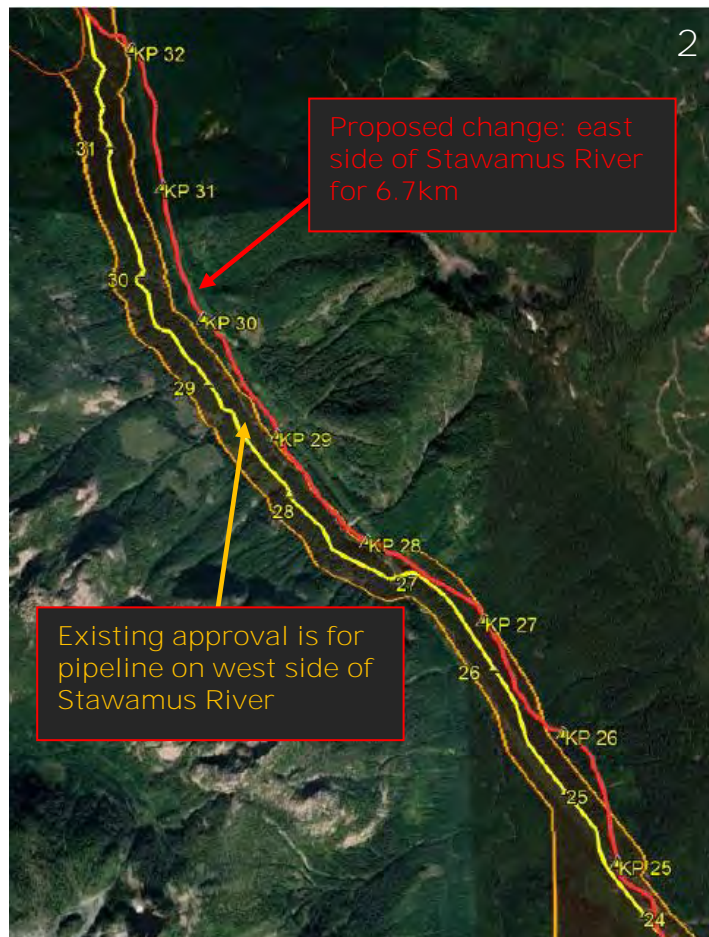


FortisBC EGP Project Update

Pipeline Amendment Application

In March 2020, FortisBC confirmed final details on a proposed project change. Approval is required by both the BC Environmental Assessment Office (EAO) and by Squamish Nation. The amendment includes:

1. Changing the location of a compressor station (maintains pipeline pressure to move the gas) from Mt. Mulligan (southeast of Valleycliffe) to the WLNG site at *swiyat*, next to the landfill.
2. Move the pipeline from west side to east side of Stawamus River as a result of feedback received from Squamish Nation. The new route would parallel the existing 1990 pipeline for 6.7km. Moving the pipeline will reduce environmental impacts including removing two Stawamus River crossings.



Decisions will depend on review of FortisBC environmental studies and community feedback. Environmental reports are expected in the summer, and there will be a comment period before a decision in autumn. More details can be found at www.projects.eao.gov.bc.ca (and searching for "Eagle Mountain").



Woodfibre LNG Project Delayed to 2021

In late March 2020, WLNG announced that construction will be postponed until Summer 2021. **The Project's** provincial approvals (from BC Environmental Assessment Office, or EAO) expire if construction does not start by October 2020, and WLNG has requested a 5-year extension from EAO.

The Squamish Nation Environmental Assessment Agreement (SNEAA) does not have a construction start date attributed to it, so there is no requirement for an update to this agreement. **The same is true for the project's** federal approval.

FLOATTEL UPDATE

The WLNG Project is currently approved to house out of town construction workforce in local rental housing. In October 2019, WLNG applied for permission to house construction workers in a floating **work camp (floating hotel = "floatel") and a walkway connecting** the camp to the construction site.

To use a floating camp, WLNG will require approval from SN, the provincial government (Environmental Assessment Office) and the federal government (Impact Assessment Agency of Canada).

In late 2019 and early 2020, WLNG was asked for more information about the proposal – including environmental protection, worker health, and how the company will manage transportation of out-of-town workers to and from the floating camp. The responses are expected in early summer, and regulatory decisions in late summer or early fall.



Overview

- Up to 600 people on board
- Intended to house the out-of-town workers, who will be flown back home between shifts
- 125m long, 32m wide, 22m high
- Two new mooring dolphins (each with 3 batter piles bundled together)*
- No propeller (barge-based, so would be towed in and out)
- New pathway through 2nd growth forest (~250m) for workers to walk to construction site
- All waste taken for off-site disposal
- Removed after construction (~ 2025)

For more information on the WLNG project, you can visit their website at <https://woodfibrelng.ca/>

*For clarity, each mooring dolphin will consist of 3 batter piles each (total of 6 piles). A batter pile is a pile installed at an angle from the others that, in the case of dolphins, come together at the top, like a cone.



Using Community Feedback in the Environmental Conditions: Mill Creek

- Community feedback during project engagement was used to develop the environmental conditions and continues to guide how the conditions are implemented.
- A frequent community concern when developing the SNEAA conditions was the protection of fish and fish habitat – both freshwater and marine.
- The most relevant freshwater habitat is Mill Creek, which runs directly through the middle of the WLNG property. This creek is heavily impacted by past site activity (see photo).



Mill Creek – previous site development has left minimal riparian (streamside) vegetation and concrete walls instead of banks, but it still supports salmon spawning.

Mill Creek Environmental Protection Conditions

- Flow protection: WLNG has a license to use freshwater from the Creek during construction and operations. Prior to doing so, the company must develop a **Water Management Plan for approval by Squamish Nation’s environmental team**. The objective is to ensure water is only used after ensuring enough flow for salmon (and wildlife) needs. Since 2017, WLNG has done extensive data collection and technical studies to meet this condition.
- Habitat protection: Primarily during construction, spills and erosion into the creek must be avoided, and remaining vegetation protected. WLNG has binding **commitments to this protection... the details to achieve these commitments will be in the “Construction Environmental Management Plan”**, which must be approved by Squamish Nation.
- Habitat restoration: Squamish Nation conditions of approval require significant restoration to Mill Creek habitat after construction. Squamish Nation will guide the restoration focus (e.g. allocating budget to in-stream, riparian vegetation, and cultural recognition).

If you would like to hear more or voice concerns about Mill Creek, please connect with one of the individuals listed on the next page.



Squamish Nation Environmental Team Contacts

We appreciate your feedback and interest!

If you have questions or concerns about Woodfibre LNG or the related FortisBC pipeline, please feel free to contact any of the representatives below.

Environmental Working Group Representatives:

Tyler Gray and Bridget Dunne on contract from PGL Environmental Consultants as technical leads and project managers. Both are biologists.

Tyler Gray (tgray@pggroup.com or 250 940 0768)

Bridget Dunne (bdunne@pggroup.com or 604-895-7659)

Environmental Working Group Community Outreach Coordinator:

Adrienne Charlie hired by SN and PGL as the Community Outreach Coordinator on both projects.

- This role provides cultural, technical, and administrative support with implementing the environmental conditions.
- This role will also be one way in which the Squamish Nation government is reporting to, and listening to, membership about environmental and cultural concerns with the projects.
- Adrienne Charlie (acharlie@pggroup.com)

Adrienne Charlie is seeking input from membership on the EGP and WLNG Projects. If you have ideas to share or concerns to raise regarding environmental, safety, or cultural impacts please connect with her. During COVID-19, she is available to answer emails, and set up video conferences with individuals or groups at your convenience.

SN's Rights and Title Department is responsible for overseeing the environmental conditions and Environmental Team.

Rights and Title Director:

Peter Baker (peter_baker@squamish.net or 604-982-0510)

IBA Environmental Subcommittee Chair:

Councillor Deanna Lewis (deanna_lewis@squamish.net)

Our Environmental Team is not involved in jobs, training and other related benefits provided by the WLNG/Fortis Agreements. For information on these topics, please contact **Paul Wick, Director of Education, Employment & Training:**

Paul Wick (paul_wick@squamish.net)