

WOODFIBRE LNG AND FORTISBC EAGLE MOUNTAIN PIPELINE PROJECTS: Update from Squamish Nation's Environmental Team February 2021



Artist rendering of the proposed floating camp ("floatel") at Woodfibre

Background

- ◆ FortisBC Eagle Mountain Pipeline (EGP) are planning to build a buried pipeline to move natural gas from a starting point north of Coquitlam to an end point at Woodfibre (*Swiyát*).
- ◆ Woodfibre LNG (WLNG) are planning to build a large industrial facility (export terminal) where gas would be condensed into liquid natural gas (LNG) and loaded on-to tankers.
- ◆ Both companies must comply with environmental conditions from Squamish Nation and provincial / federal agencies before construction can begin, and then meet a different set of conditions before operations could begin.
- ◆ Squamish Nation Rights and Title Department is responsible for overseeing the environmental conditions on both of these projects through an Environmental Subcommittee.

MESSAGE TO SQUAMISH NATION MEMBERS: WHAT WOULD YOU LIKE TO LEARN MORE ABOUT?

Message to Squamish Nation members:

The Environmental Subcommittee acknowledges that Squamish Nation members have strong feelings about the Woodfibre LNG and Fortis BC Eagle Mountain Pipeline projects. We would like you to know that your voices are important and valuable. Your questions and comments can still have direct and indirect impacts on how the projects are planned and carried out.

In efforts to ensure Squamish Nation membership is well informed on the Woodfibre LNG and FortisBC Eagle Mountain Pipeline projects, we would like to know:

- ◆ **What would you like to know more about?**
- ◆ **What would you like to see in monthly community updates?**
 - ◆ **For example: You could ask:**

Who sits on the Environmental Subcommittee and how does the Subcommittee advocate for the Squamish Nation?

OR

How can I get a job on the project(s)?

OR

How is the Squamish Nation ensuring all conditions on these projects are being met?

OR

What's happening with the FLOATEL or the FortisBC workcamp?

All questions can be directed to me, Elizabeth Ross, Community Outreach Coordinator by **phone/text at 778-966-1117 or via **email: swiyat@squamish.net** and I will work to provide answers as well as use your questions and concerns to guide update content.**

**Chen kwenmántumiyap,
Leslhá7lhamaat, Elizabeth Ross.**

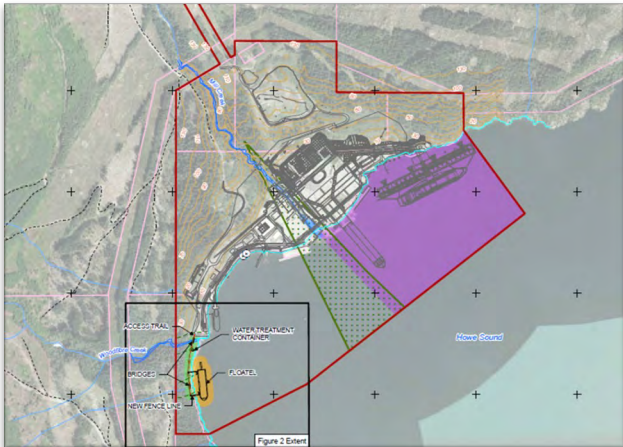
WOODFIBRE-LNG AND FORTIS BC AMENDMENT APPLICATION

Both Woodfibre and FortisBC have made applications to change their project scope. These applications need to undergo the same approval processes that the original projects required.

Woodfibre LNG amendment application overview

The Woodfibre LNG amendment application is relatively straight forward.

1. **FLOATTEL:** A floating construction camp (“floatel”) moored for approximately three years just southwest of the project area. The floatel would include beds for up to 600 workers, along with typical camp facilities (e.g., recreation areas, kitchen, dining).
2. **Marine Construction Vessel:** A lower-profile part of the amendment includes permission to add housing for up to 150 workers on the Marine Construction Vessel for one to two years.



Site map indicating potential floatel location with new pathway to the project area.

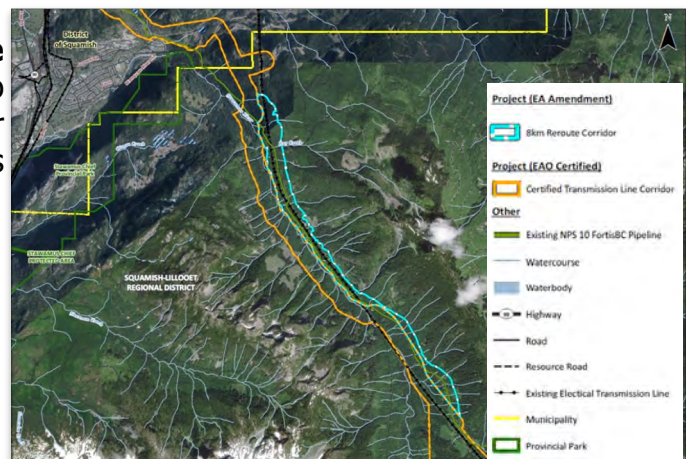


Shoreline area where floatel would be located (viewing southeast).

The FortisBC amendment application is a bit more complex and is broken into 4 parts:

1. **Expand the pipeline corridor near the Stawamus River:** The main reason is to remove the need for **two** Stawamus River crossings and to find operational efficiencies within an existing pipeline right of way.

Stawamus Corridor Pipeline Expansion to the east of the river.





- 2. Relocate the v2 Squamish Compressor Station:** The Squamish Compressor Station (v2) is currently approved at the Mount Mulligan (near Valleycliffe) location. FortisBC are proposing to relocate the station to the northeast side of the Woodfibre site above the current landfill. ****It is important to note that the original preferred location for the v2 compressor station was at Woodfibre. However, the compressor station in Coquitlam did not have enough pressure for the liquid natural gas to reach Woodfibre. Therefore, FortisBC planned to build the v2 compressor station at Mount Mulligan. Amendments #3 and #4 will directly impact the need for v2 compressor station to be built a shorter distance away from the Coquitlam compressor station because the amendments deal with pressure issues in the pipeline.**



Proposed relocation of v2 compressor station from Mt Mulligan to Swiyát site.

- 3. Twin the Coquitlam Pipeline:** FortisBC would like to add 3km of gas pipeline to twin the existing FortisBC pipeline from the existing Eagle Mountain Compressor Station. The existing 10 inch pipeline in this area experiences low flow efficiency and pressure loss, this amendment is proposed to resolve these issues, improve reliable service to Woodfibre and eliminate the necessity for a compressor station to be installed at Mount Mulligan.
- 4. Eagle Mountain Compressor Station Design Change:** FortisBC are proposing to use two 26,000 horsepower electric motor driven compressor units at the Eagle Mountain Compressor Station instead of the two 20,500 hp units currently approved in the EAC. The reason for this change is that customized compressor unit designs are no longer available, and vendors now offer standardized compressor unit packages. No footprint changes are anticipated as a result of this amendment.

Amendments #3 and #4 will take place in Coquitlam, but they are necessary for amendment #2 in Squamish.

The amendments have not yet been approved and are still open for public comment.

Squamish Nation membership are encouraged to forward comments, concerns, and questions to Community Outreach Coordinator, Elizabeth Ross at swiyat@squamish.net. You can also call or text Elizabeth at **778-966-1117**.

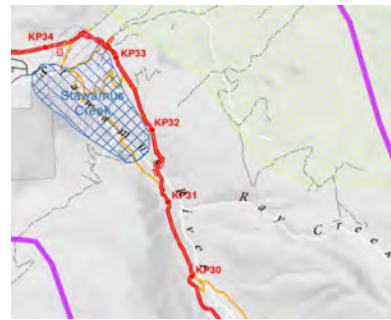
CULTURAL SITES ALONG EAGLE MOUNTAIN PIPELINE ROUTE

- ◆ There are two *Síiyámin ta Skwxwú7mesh*-Squamish Nation Cultural Sites in close proximity to the proposed Eagle Mountain Pipeline route. The Indian River Cultural Site and the Stawamus River Cultural Site (pictured below) are also protected by agreement between the Squamish Nation and the Province of BC. There will be no construction taking place within the Cultural Sites, but the proximity to the sites is being negotiated. The Environmental Subcommittee will be working with FortisBC to ensure the protection of these sites and we welcome Squamish Nation membership comments and feedback.
 - ◆ Do you or your family members utilize either or both these sites?
 - ◆ Do you have information about past uses of these sites?

Indian River
Cultural Site
in proximity
to Eagle
Mountain
Pipeline



Stawamus
Creek/River
Cultural
Site in
proximity
to Eagle
Mountain
Pipeline



All questions, comments and concerns on the Woodfibre LNG-FortisBC Eagle Mountain Pipeline projects can be directed to me, Elizabeth Ross, Community Outreach Coordinator by **phone/text at 778-966-1117 or via **email: swiyat@squamish.net****