

# WOODFIBRE LNG AND FORTISBC EGP PROJECTS: Update from Squamish Nation's Environmental Team December 2020

Since June 2019, the Squamish Nation's environmental team has been posting monthly progress updates through the community newsletters. We have included a longer newsletter this month, since it has been awhile since we recapped some of the big picture items!!

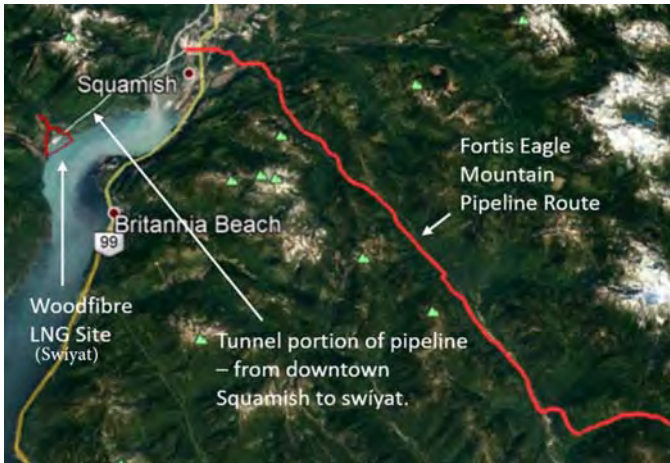


Artist rendering of the proposed floating camp ("floatel") at Woodfibre

## PROJECT QUICK FACTS

- ◆ The pipeline will be about 50km long and mostly follows an existing gas pipeline built in 1990.
- ◆ The export terminal will involve a large facility both on land and on a floating storage/offloading unit (called "FSO").
- ◆ During operations, approximately one LNG tanker per week will come in and out of Howe Sound for loading.
- ◆ Construction may start by late 2021 and would take about 4 years.
- ◆ Both companies (FortisBC and WLNG) are currently requesting approval to amend the project descriptions that were approved in 2015 / 2016.

## Environmental Management of Woodfibre LNG and Fortis BC Eagle Mountain Pipeline



- ◆ FortisBC are planning to build a buried pipeline, the Eagle Mountain– Woodfibre Gas Pipeline (EGP), to move natural gas from a starting point north of Coquitlam to an end point at Woodfibre.
- ◆ Woodfibre LNG (WLNG) is planning to build a large industrial facility (export terminal) where gas would be condensed into liquid natural gas (LNG) and loaded onto tankers.
- ◆ Both companies must comply with additional environmental conditions from Squamish Nation and provincial /federal agencies before construction can begin.

## Environmental Management of Woodfibre LNG and Fortis BC Eagle Mountain Pipeline

### Squamish Nation issued 25 conditions when these projects were approved in 2015. How are these 25 conditions being met?

Of the 25 conditions, some were requirements of Woodfibre LNG, some were required from FortisBC and some required of the BC government. Some of these conditions were high-level requirements. Detailed versions of those conditions later became part of the Squamish Nation Environmental Assessment Agreements (“SNEAA”). Some of those conditions require a tremendous amount of work (for example: condition #6 and Squamish Nation oversight of environmental monitoring programs), whereas other conditions are relatively straightforward (for example: condition #8, no future expansion of the project without Squamish Nation approval).

The SNEAAs define a Terms of Reference for a Technical Working Group. Squamish Nation has assigned representatives and supporting staff to the Technical Working Groups through the Rights and Title Department. These representatives work with Rights and Title staff to ensure the right technical and cultural expertise is available for the environmental conditions.

The SNEAAs also categorize which of the environmental conditions are “pre-construction” or “pre-operations” conditions.

Conditions are tracked carefully. Neither WLNG nor FortisBC can start construction without written approval from Squamish Nation that the pre-construction conditions are met. The same will be true before operations could ever start, and through the life of the project.

## Welcome Elizbeth Ross!

### Community Outreach Coordinator- Woodfibre LNG/FortisBC Squamish Nation Environmental Assessment Agreements

Tanúyap, Skwxwú7mesh-ulh. Leslhá7lhamaat kwi en kwshámin, Elizabeth (Liz) Ross kwi en sna. Linda Calla kwélhi en cheshá7. Tony Calla-t iy Leslhá7lhamaat-t Sally (Nee Band) kwiya'wit en selsi7l-t. Tiná chan t'l'a Eslha7áñ úxwumixw, chen wa emút na7 tkwa Xwmélch'stn úxwumixw esk'ekw'ú7 kwen ménmen. Ts'á7tsaxw kwins na wa p'í7ksim ti xaws sts'its'áp'.

Greetings Skwxwú7mesh people. Leslhá7lhamaat is my ancestral name. Elizabeth (Liz) Ross is my english name. My mother is Linda Calla. My late grandparents are Tony Calla and Leslhá7lhamaat-t, Sally (nee Band). I come from Eslha7áñ and I stay on the Capilano reserve with my children. I'm happy to start this new work.

I have a Bachelor's degree in Social Work and worked for several years as a Cultural Child and Youth Worker for the Squamish Nation. I am also near completion in SFU's First Nations Language Proficiency Diploma specializing in the Squamish Language. I recently created a consulting business and was hired in this new role as the Community Outreach Coordinator for the WLNG / FortisBC Squamish Nation Environmental Assessment Agreements.

I am fortunate to bring to this role my cultural background, my knowledge of some of our traditional plants and medicines, and my understanding of the importance of our connection to our lands and waters as Squamish People. Part of my role includes overseeing the Eagle Mountain Vegetation Management Project. Through this project we will be looking at ways to harvest and/or transplant as much of the traditional edible and medicinal vegetation along the Eagle Mountain Pipeline route as possible prior to its completion.

Another project that I will be overseeing is the creation of the Mill Creek Restoration Steering Committee. The Mill Creek Restoration project requires the input of individuals that are interested in helping restore this fish bearing creek that is located at Swiyát.

If you would like to know more about the WLNG/ FortisBC EMP, the Eagle Mountain Vegetation Management, or the Mill Creek Restoration projects, please feel free to reach out to me at my contact below. I look forward to connecting with you to provide information and to receive your input.

Leslhá7lhamaat, Elizabeth Ross  
Community Outreach Coordinator  
778-966-1117  
swiyat@squamish.net



## Summary List of Environmental Conditions of Approval

- |   |   |
|---|---|
| <ul style="list-style-type: none"> <li>a) Abandoning the original plan to use sea water cooling, due to concerns of large water intakes and discharge of chlorine.</li> <li>b) Mill Creek habitat restoration and cultural recognition of Swiyát</li> <li>c) Environmental flow protection of Mill Creek</li> <li>d) Funding for Howe Sound Marine Use Plan</li> <li>e) No machinery or digging in Skwelwíl'em (Squamish River Estuary) Tunneling will be used instead</li> <li>f) No barges in Skwelwíl'em</li> <li>g) Gas compressor stations not permitted near any Squamish Naiton Reservations</li> <li>h) Ensuring the project never switches from Liquid Natural Gas to oil shipments</li> </ul> | <ul style="list-style-type: none"> <li>i) No project expansions without Squamish Nation approval</li> <li>j) Special measures to protect Monmouth Creek, Stawamus River and Indian River <i>Siiyámin ta Skwxwú 7mesh</i>(SN cultural sites)</li> <li>k) Provision of access for SN members through security-restricted areas and minimizing disruption where pipeline work is near cultural sites</li> <li>l) Unique insurance coverage for SN members</li> <li>m) No bunker fueling (ship-to-ship refueling) of tankers permitted within SN territory</li> <li>n) SN approval for environmental management and follow-up monitoring plans for construction and operation phases</li> <li>o) Supporting additional research for Howe Sound marine life</li> </ul> |
|---|---|

## Ns7íxni kwetsi Spéñem Protecting Culturally Important Plants

The pipeline for the WLNG project will generally follow the Indian River and Stawamus River before tunneling from downtown Squamish to Swiyát (Woodfibre). Construction of the tunnel in the backcountry will require clearing roughly a 30m strip of vegetation. This vegetation includes everything from mature forest to sections of invasive blackberries. FortisBC is required to avoid or transplant rare plants and old growth forest as much as possible.

Typical government permits do not address plants of cultural importance to Squamish Nation. This may include plants used for medicines, food, or ceremony. Through the Squamish Nation conditions of approval, FortisBC has also provided resources for Squamish Nation to inventory plants along the pipeline route and identify ways to harvest or relocate plants. This work will be ongoing in spring and summer of 2021 and likely 2022. (Similar work will apply for the WLNG site, although that requires much less clearing).



Ch'átyay Devil's Club



Ts'exts'ix Stinging Nettle



Xapayayachwx Red Cedar Bough



## Volunteer for Mill Creek Restoration Steering Committee

Squamish Nation is Looking for Members interested in forming a volunteer steering committee to guide the restoration of Mill Creek at Swiyát, Woodfibre LNG site.



### Background:

Mill Creek runs through Swiyát, also known as the Woodfibre LNG property site and empties into Nexwnéwu7ts Átl'ka7tsem, Howe Sound.

From past pulp and paper operations the habitat of Mill Creek is damaged but it still supports several species of salmon, Rainbow Trout and Dolly Varden.

### As a member of the volunteer Mill Creek Restoration Steering Committee you will be asked to take part in the following:

- ◆ Define a vision for a restored Mill Creek
- ◆ Look into fish habitat options, versus space available on site
- ◆ Cultural recognition of Swiyát, such a planning for signage or art installation
- ◆ Determine how to prioritize tasks to be done in phases over several years

## FortisBC—Project Amendment Application

In late October, FortisBC officially submitted their application to amend the environmental approvals from BC and from Squamish Nation. The requested approvals are for (a) compressor station at Swiyat (Woodfibre) instead of Mt. Mulligan (Valleycliffe); (b) move from the west to east side of Stawamus River in the upper reaches; (c) change the design of the existing compressor station in Coquitlam; and (d) run 3km of “looped” pipeline in Coquitlam.

We have been providing updates for about a year as this application went from conceptual to a formal request for approval. Squamish Nation is now collaborating with BC Environmental Assessment Office (EAO) to review these reports. Thank you for those who responded to our survey on this topic in August and September. Decisions (BC Environmental Assessment Office and Squamish Nation) will likely happen in spring 2021.

Anyone wishing to read the detailed reports or provide comments to EAO can find them at the link below (or do a web search for “BC EAO Eagle Mountain”). If you have concerns or feedback on this application please contact Liz Ross.

<https://www.projects.eao.gov.bc.ca/p/588511ddaecd9001b826f0d/project-details;currentPage=1;pageSize=10;sortBy=-datePosted;ms=1605203009283>

## Woodfibre LNG General Environmental Update

### Floatel

The floating camp (“floatel”) has been proposed to reduce the number of out-of-town workers that would move into Squamish or North Van during construction.

In late 2019, Woodfibre LNG was asked for detailed information about environmental, community, and worker wellness protection. COVID-19 created a bunch of new planning requirements. Currently, Woodfibre LNG intends to submit new environmental and social assessment reports in January 2021.

Squamish Nation is a decision maker on the floatel. The decision will take into account the potential pros and cons of the floatel, compared to having no camp and workers find rental or purchase housing in town.

Issues of interest include fish habitat, avoiding pollution, safety for all workers and special focus on women, pandemic management, plans for off-shift workers in and out of town, drug and alcohol concerns. Thank you to everyone who responded to our survey to help refine the priority issues!



Example floating camp (<https://landseacamps.com>)

### Other News

- ◆ Woodfibre LNG has been working on drafts of Environmental Management and Monitoring Plans for construction. The Squamish Nation team is currently reviewing plans for wildlife protection and invasive plant management.
- ◆ Squamish Nation environmental representatives visited the site on November 27, 2020 to look at pre-construction site clean up and potential areas for soil and rock storage areas during construction
- ◆ Overall, Woodfibre LNG expects that construction could begin by Fall 2021. It is a busy time for everyone working to ensure pre-construction environmental conditions are met.



Site cleanup, November 2019

## Contact Information

### Education, Employment and Training

A reminder that the Squamish Nation environmental conditions of approval are separate from any Impact Benefit Agreement terms. These newsletters are created by the environmental team, to provide updates on the environmental conditions. We sometimes get questions about other things that are part of the IBA.

**For Squamish Nation members, there are opportunities for jobs and training with the Woodfibre LNG and FortisBC projects.** Please contact Paul Wick, Squamish Nation's Director of Education, Employment and Training, to learn more about these opportunities.

**Paul Wick**  
**604-982-7600**  
**paul\_wick@squamish.net**

### Environmental and Social Conditions

If you have questions about environmental conditions: we want to keep Nation members informed as possible on these two projects and welcome your feedback, concerns and questions.

**Elizabeth Ross**  
**Community Outreach Coordinator (Environmental Conditions)**  
**778-966-1117**  
**Swiyat@squamish.net**