



**WOODFIBRE LNG AND FORTISBC  
EAGLE MOUNTAIN PIPELINE  
PROJECTS:  
Update from Squamish Nation's  
Environmental Team  
April 2021**

**In this newsletter:**

- Message From Education, Employment and Training and Nch'kay Development Corp.
- Fortis BC Work Camp/Workforce Accommodations update
- Cultural Sites along EGP route
- EGP Vegetation Management Project update-Woodfibre-LNG Amendment Application
- Fortis BC Amendment Application

**Background**

- ♦ FortisBC Eagle Mountain Pipeline (EGP) are planning to build a buried pipeline to move natural gas from a starting point north of Coquitlam to an end point at Woodfibre (*Swiyát*).
- ♦ Woodfibre LNG (WLNG) is planning to build a large industrial facility (export terminal) where gas would be condensed into liquefied natural gas (LNG) and loaded onto tankers.
- ♦ Both companies must comply with environmental conditions from Squamish Nation and provincial / federal agencies before construction can begin, and then meet a different set of conditions before operations could begin.
- ♦ Squamish Nation Rights and Title Department is responsible for overseeing the environmental conditions on both of these projects through an Environmental Subcommittee.

## MESSAGE FROM EDUCATION, EMPLOYMENT AND TRAINING AND NCH'KAY DEVELOPMENT CORP.

Recently the Environmental Team has been contacted by Squamish Nation members requesting information about obtaining jobs on the Woodfibre LNG or FortisBC EGP projects. Here is a message from the Squamish Nation Education, Employment and Training Department and Nch'kay Development Corp.:

"Education, Employment and Training are continuing to discuss with WLNG and the two Fortis projects proponents (pipeline and tunnel) to define employment and training opportunities and pathways."

"Woodfibre LNG (WLNG) is anticipating a Final Investment Decision (FID) is Q3 2021. All Squamish Nation members and businesses seeking employment or business opportunities for the project are encouraged to contact either the Squamish Nation Education, Employment & Training department or Nch'Kay Development Corp. (NDC) if you haven't already done so to learn more on how you can get involved with the WLNG project."

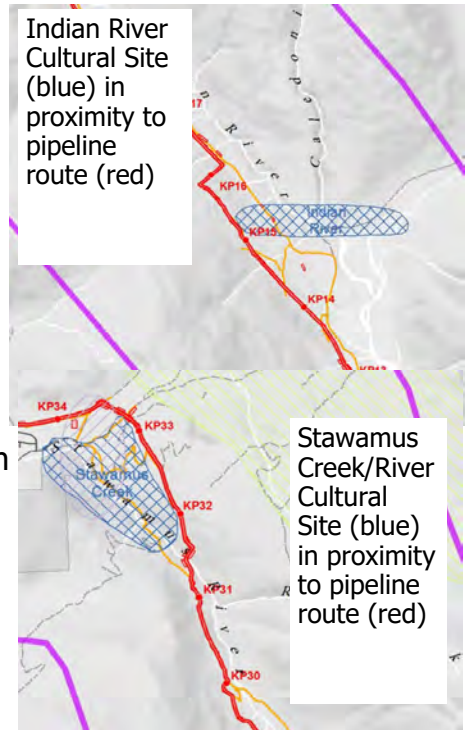
Education, Employment and Training Department: 604 982 7600  
Nch'Kay Development Corp.: 604-998-0275  
WoodfibreLNG-Fortis BC EGP Community Outreach Coordinator: 778-966-1117  
email: [swiyat@squamish.net](mailto:swiyat@squamish.net)

## FORTIS BC WORK CAMP / WORKFORCE ACCOMODATIONS

- FortisBC is currently looking at several locations for their workforce accommodations in and around Squamish.
- Fortis BC is required to follow all Federal and Provincial regulations for the operation of their workforce accommodations.
- Squamish Nation's Environmental Subcommittee for this project (through the Rights and Title Department) is working to ensure that Fortis is respectful of *Síiyámin ta Skwxwú7mesh* Squamish Nation Cultural Sites, hunting, fishing, harvesting areas of plants, and medicines. The proximity of proposed workforce camps/accommodations to Squamish Nation Reserves will also be taken into consideration when the Environmental Subcommittee provides feedback and recommendations to Fortis.
- From research on previous work camps throughout BC that were built in or around Indigenous communities, we are aware of the possible impacts the work camps have had on them. The Environmental Subcommittee is using this information and is working with other Squamish Nation Departments to review existing SN support services, resources and programs in place to ensure any possible impacts to the SN community are minimized or mitigated.

## CULTURAL SITES ALONG EAGLE MOUNTAIN PIPELINE ROUTE

- ◆ There are two *Síiyámin ta Skwxwú7mesh*-Squamish Nation Cultural Sites in close proximity to the proposed EGP pipeline route. The Indian River Cultural Site and the Stawamus River Cultural Site (pictured below) are also protected by agreement between the Squamish Nation and the Province of BC. There will be no construction taking place within the Cultural Sites, but the proximity to the sites is being discussed. The Environmental Subcommittee has been working with FortisBC to ensure the protection of these sites and we welcome Squamish Nation membership comments and feedback.
  - ◆ Do you or your family members utilize either or both these sites?
  - ◆ Do you have information about past uses of these sites?
  - ◆ Do you have opinions or concerns about how construction near these sites might interfere with Squamish Nation rights and culture?



## EGP VEGETATION MANAGEMENT

*Tem kw'éyús* (spring time) is upon us. Very soon, work will begin on the Eagle Mountain Vegetation Management Project.

Through this project we will be looking at ways to harvest and/or transplant as much of the traditional edible and medicinal vegetation along the EGP route as possible prior to its completion.



*Ch'átiyá* -Devil's Club



*Yetwána*-Salmonberries



*Ts'exts'ix*-Stinging Nettle

## WOODFIBRE-LNG AMENDMENT APPLICATION

In 2019, WoodfibreLNG applied to change their project scope. This application needs to undergo the same approval processes that the original project required (provincial, federal, and Squamish Nation governments). The amendment process is long! WLNG started their application in October 2019. WLNG have been working on additional reports requested by agencies, and regulatory decisions will hopefully wrap up in summer 2021.

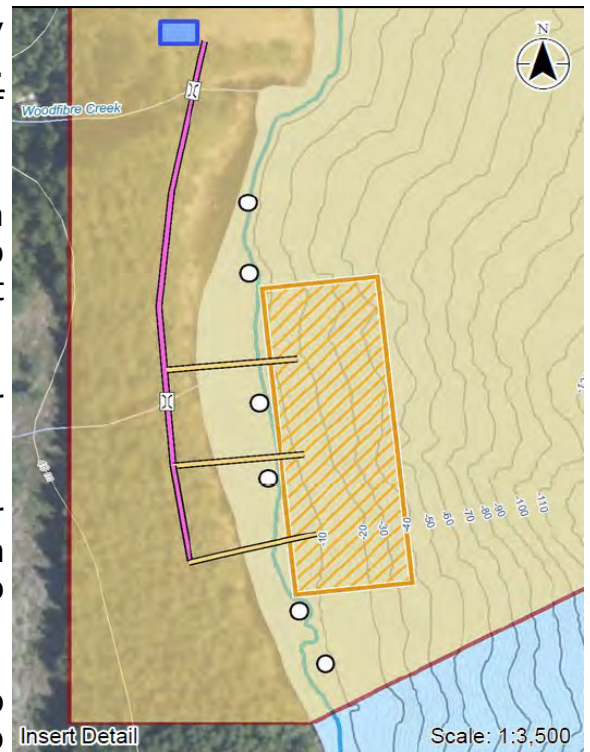
### Woodfibre LNG amendment application overview:

The Woodfibre LNG amendment application is a floating worker accommodation consisting of:

1. **FLOATTEL:** A floating construction camp ("floatel") moored for approximately three years just southwest of the project area.
2. **Marine Construction Vessel:** permission to add housing for up to 150 workers to the previously approved marine construction vessel(s) for the duration the vessels are in use on site (typically during least risk marine construction window August to February).

### Recap of key points:

- Drinking water for workers would be from nearby Woodfibre Creek, and an on-shore treatment plant. Water use from Woodfibre Creek is already part of project approvals.
- No waste water or garbage would be discharged from the floatel into Howe Sound. WLNG has committed to barging all waste to an existing waste management facility.
- The floatel would be connected to a footpath for works to walk to the construction site (~300m)
- Since 2019, WLNG has been working on requests for more detail on things like noise, worker health, fish and wildlife details, and details for moving workers to and from site.
- If the floatel is not approved, the project can revert to existing approvals for the same number of workers to use rental housing, or hotels, or other available accommodations in Sea to Sky area.



## FORTIS BC AMENDMENT APPLICATION

**FortisBC applied for the following amendment in November 2020. The company is working on additional reports based on regulatory review. The additional information and a possible regulatory decision (Squamish Nation and BC) may occur in spring or summer 2021:**

- 1. Expand the pipeline corridor near the Stawamus River:** To allow pipeline construction on the east side of the river, and reduce river crossings (current approval is for construction on west side of the river).
- 2. Relocate the v2 Squamish Compressor Station:** The Squamish Compressor Station (v2) is currently approved at the Mount Mulligan (near Valleycliffe) location. FortisBC are proposing to relocate the station to the northeast side of the Woodfibre site above the current landfill.
- 3. Twin the Coquitlam Pipeline:** For more efficient operations, FortisBC would like to add 3km of gas pipeline to twin the existing FortisBC pipeline from the existing Eagle Mountain Compressor Station.
- 4. Eagle Mountain Compressor Station Design Change:** Fortis has proposed changing the capacity of this existing compressor station, using electric-motor drives. No change in footprint for this existing station in Coquitlam.

**The amendments have not yet been approved and are still open for comment.**

Squamish Nation membership are encouraged to forward comments, concerns, and questions to Community Outreach Coordinator, Elizabeth Ross at [swiyat@squamish.net](mailto:swiyat@squamish.net). You can also call or text Elizabeth at **778-966-1117**.



Proposed relocation of v2 compressor station from Mt Mulligan to Swiyat site.