



Woodfibre LNG and FortisBC: Update from Squamish Nation Environmental Implementation Team 01 April 2020

Since June 2019, Squamish Nation's (SN) environmental team has been posting monthly project updates through the community newsletters. In this edition:

- Page 2 and Page 3 – Woodfibre LNG project update
- Page 4 – FortisBC EGP project update
- Page 5 – Using community feedback
- Page 6 – Squamish Nation contacts

Background

- FortisBC Eagle Mountain Pipeline (EGP) are planning to build a buried pipeline to move natural gas from a starting point north of Coquitlam to an end point at Woodfibre.
- Woodfibre LNG (WLNG) are planning to build a large industrial facility (export terminal) where gas would be condensed into liquid natural gas (LNG) and loaded onto tankers.
- Both companies must comply with environmental conditions from Squamish Nation and provincial / federal agencies before construction can begin, and then meet a different set of conditions before operations could begin (see Page 5 for more info).
- Squamish Nation Rights and Title Department is responsible for overseeing the environmental conditions.

QUICK FACTS

- WLNG and EGP project areas are shown on page 5.
- The pipeline will be about 50km long and mostly follows an existing gas pipeline built in 1990.
- The export terminal will involve a large facility both on land and on a floating storage/offloading unit (called "FSO").
- Approximately one LNG tanker per week will come in and out of Howe Sound for loading.
- Approximate construction dates for WLNG is 2020 and 2021 for Fortis.
- Regular newsletter updates will include general background information and current details of environmental planning.

If you have suggested topics for future newsletters, please let us know! Contact info is on page 6.



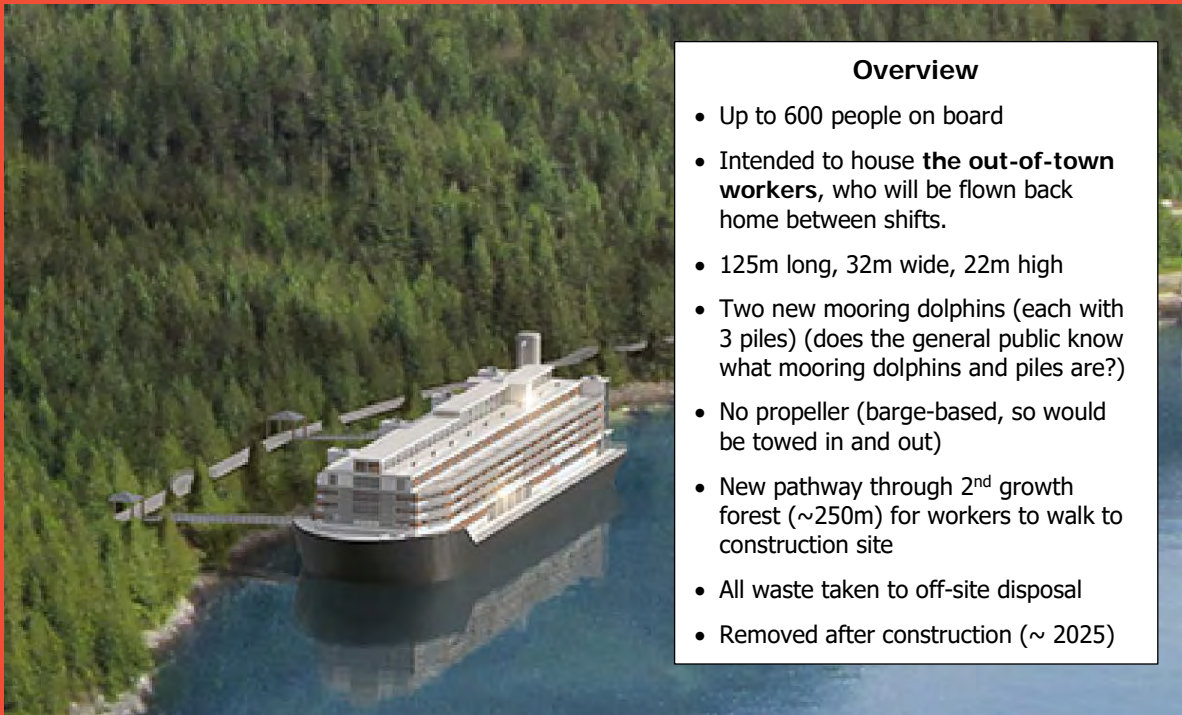
Woodfibre LNG Project Delayed to 2021

In late March, Woodfibre LNG announced that construction will start no earlier than late 2021. The company had previously targeted a start in 2020. The new timeline is likely to reduce the short-term pace of work on pre-construction environmental conditions.

FLOATTEL UPDATE

In October 2019, Woodfibre LNG applied for permission to house construction workers in a floating work camp (floating hotel = “floatel”) and a walkway connecting camp to the construction site. This option is a change to the existing approvals for the out of town construction workforce to use local rental housing.

To use a floating camp, WLNG will require approval from Squamish Nation, the provincial government (Environmental Assessment Office) and the federal government (Impact Assessment Agency of Canada). WLNG have been asked for more information about the proposal – including environmental protection, worker health, and how the company will manage transportation of out-of-town workers to and from the floating camp. The responses are expected later in spring, and regulatory decisions in the summer.



Overview

- Up to 600 people on board
- Intended to house **the out-of-town workers**, who will be flown back home between shifts.
- 125m long, 32m wide, 22m high
- Two new mooring dolphins (each with 3 piles) (does the general public know what mooring dolphins and piles are?)
- No propeller (barge-based, so would be towed in and out)
- New pathway through 2nd growth forest (~250m) for workers to walk to construction site
- All waste taken to off-site disposal
- Removed after construction (~ 2025)

If you have questions or comments about the floating camp, please contact Rights and Title (peter_baker@squamish.net) or the environmental review technical team (Tyler Gray: tgray@pgggroup.com, 250-940-0768).



WLNG – Squamish Nation Environmental Working Group

WLNG’s environmental team about once per month as the “environmental working group”.

A key environmental condition for the SN team is review of construction-phase Environmental Management Plans, which need approval from SN prior to construction – see page 6 for background on this condition.

- A) In addition to technical criteria on environmental protection, we are working to add the *Skwxwú7mesh Sníchim* (Squamish language) into the Environmental Management Plans.
- B) Pace of Environmental Management Plan review work has been slower over winter and early spring, as WLNG needs to know if the floatel is proceeding to know the full scope of the Environmental Management Plans.
- C) Pace is also somewhat delayed because of the delayed construction target of late 2021. Construction contractors will need to get involved for finalizing many Environmental Management Plans, in order to meet SN’s required level of detailed planning.

WLNG’s owner has not yet made a “final investment decision” to build the project. Both the WLNG and the SN environmental teams are working on the pre-construction environmental conditions on an assumption that this decision will eventually be made.

WLNG DARRELL BAY CREW DOCK

We reported in December that WLNG was proposing to construct a crew transport dock at Darrell Bay. **WLNG have confirmed they will not build a new dock** and will instead use the existing Ministry of Transportation and Infrastructure (MOTI) dock to ferry workers to and from *swíyat*.



HERRING IN ATL’KA7TSEM

Concerns about impacts to fish in *Atl’ka7tsem* (Howe Sound) have been top of list for SN since the first concept of this project in 2014.

Prior to construction, WLNG must develop fish habitat restoration plans. A century of pulp mill operations leaves lots of room to improve marine habitat at *swíyat*. The objective is to make habitat around *swíyat* better during project operations than it was before construction.

General direction from SN to WLNG has been to address herring, juvenile salmon, shellfish, and lingcod habitat impacts around *swíyat*. WLNG provided early concepts of their plans in January 2020.

Monitoring must be able to show if the restoration is working, and to identify back-up plans if more work is needed. Expect more details later in 2020.



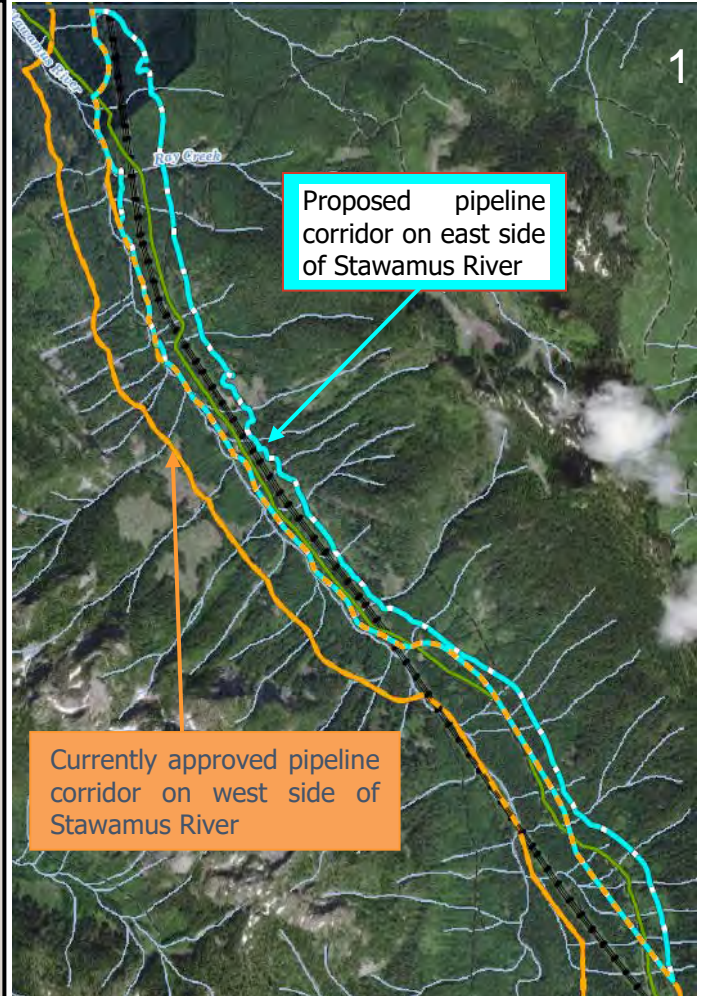
Pipeline Amendment Application

FortisBC have moved forward with final details on a proposed project change. Approval is required by both the BC Environmental Assessment Office and by Squamish Nation.

1. Change the location of a compressor station from Mt. Mulligan (southeast of Valleycliffe) to on-site at *swíyat*.
2. Move the pipeline from west side to east side of Stawamus River. (For those who know the area, the existing FortisBC gas line that was constructed in 1990 is on the east side of the river.)

Two other changes would occur outside of SN territory.

So far, FortisBC has only submitted the project description. Environmental reports are expected in the summer, and there will be a comment period before a decision in autumn. More details can be found at www.projects.eao.gov.bc.ca (and searching for "Eagle Mountain").



Possible relocation of the new FortisBC compressor from Mt Mulligan to *swíyat*. This is the same compressor station that originally would have been near Yekwaupsum 17, but was relocated to Mt. Mulligan as part of Squamish Nation's environmental conditions.



Using Community Feedback in the Environmental Conditions

“Industry and government have a legacy of broken promises in Atl’ka7tsem (Howe Sound)”

- Squamish Nation’s approval of the WLNG and EGP projects included environmental conditions relating to changes in project design, pre-construction planning, ongoing environmental monitoring, and adaptive management.
- Community feedback during project engagement was used to form the environmental conditions and continues to guide how the conditions are implemented.
- The Squamish Nation team heard repeatedly about a legacy of broken promises from government and industry. This message was part of environmental conditions around PROPONENT ACCOUNTABILITY
- One condition is Squamish Nation to cooperatively develop a Monitored Mitigation Measures Plan (MMMP) with each proponent (Woodfibre and FortisBC).
 - The MMMP provides Squamish Nation with the means to monitor and enforce commitments and mitigation measures agreed to in both the Woodfibre and FortisBC EAs.
 - Squamish Nation will be monitoring the two projects and will issue a notice to the proponent if concerns are identified. In the event the Nation is not satisfied with the proponent’s response, there is a legally binding dispute resolution process.
 - The oversight under the MMMP is in addition to on-site environmental monitoring contracted by the proponents, and by other levels of government.
 - This is a way for both proponents to fulfill voluntary environmental commitments not monitored by government regulators, so that a promise made is a promise kept.
 - The MMMP facilitates Squamish Nation going to each project site on a quarterly basis (at a minimum).
 - During construction and as long as WLNG is an operating project, visits will focus on the implementation and effectiveness of environmental mitigation measures. If you would like to join one of these site visits, please connect with one of the individuals listed on the last page.



Squamish Nation: Project Environmental Contacts

Squamish Nation appointed technical representatives to the Woodfibre LNG and FortisBC EGP Environmental Working Groups:

Tyler Gray and **Bridget Dunne** on contract from PGL Environmental Consultants as technical leads and project managers. Both are biologists.

Adrienne Charlie hired by Squamish Nation and PGL as the Community Outreach Coordinator on both projects.

- This role provides cultural, technical, and administrative support with implementing the environmental conditions.
- This role will also be one way in which Squamish Nation leadership is reporting to, and listening to, membership about environmental and cultural concerns with the projects.

Individual or small group meetings are available if you would like to learn more about the environmental conditions. During Covid-19 measures, meetings are only available via phone or video call.

Squamish Nation's Environmental Working Group representatives report to the Rights and Title Department. The Environmental Working Group also liaises with a sub-committee of the IBA Implementation Committee.

If you have environmental questions or concerns about Woodfibre LNG or the related FortisBC pipeline, please contact:

Environmental Working Group Representatives:

Tyler Gray (tgray@pggroup.com or 250 940 0768)

Bridget Dunne (bdunne@pggroup.com or 604-895-7659)

Environmental Working Group Community Outreach Coordinator:

Adrienne Charlie (acharlie@pggroup.com)

Rights and Title Director:

Peter Baker (peter_baker@squamish.net)

IBA Environmental Subcommittee Chair:

Councillor Deanna Lewis (deanna_lewis@squamish.net)