



Dear Neighbour:

**Re: Lower Lynn Improvements Phase 2 – Exit Lane Closure and Traffic Detour**

Due to construction staging of the ongoing Phase 2 of the Lower Lynn Improvements Project, Exit 22A from Westbound Highway 1 will be closed indefinitely, commencing **Tuesday March 5<sup>th</sup>**. Westbound Highway 1 traffic proceeding east on to the Fern St slip lane, or north on to Lillooet Road, will be affected by this closure. Please see attached map accompanying this letter for detouring details.

For those attending Capilano University, or residents of the Lynnmour District, please use the detours illustrated on the map as indicated.

Understanding the impact traffic detours have on the community, we are making every effort to complete this work as quickly and safely as possible.

More information on this project, including contact information for questions regarding project staging design, is available at:

[gov.bc.ca/lowerlynninterchanges](http://gov.bc.ca/lowerlynninterchanges).

For questions and concerns regarding traffic detours and traffic signs please contact Gord Bird, Project Manager with Lafarge Canada Inc. (Contact info below).

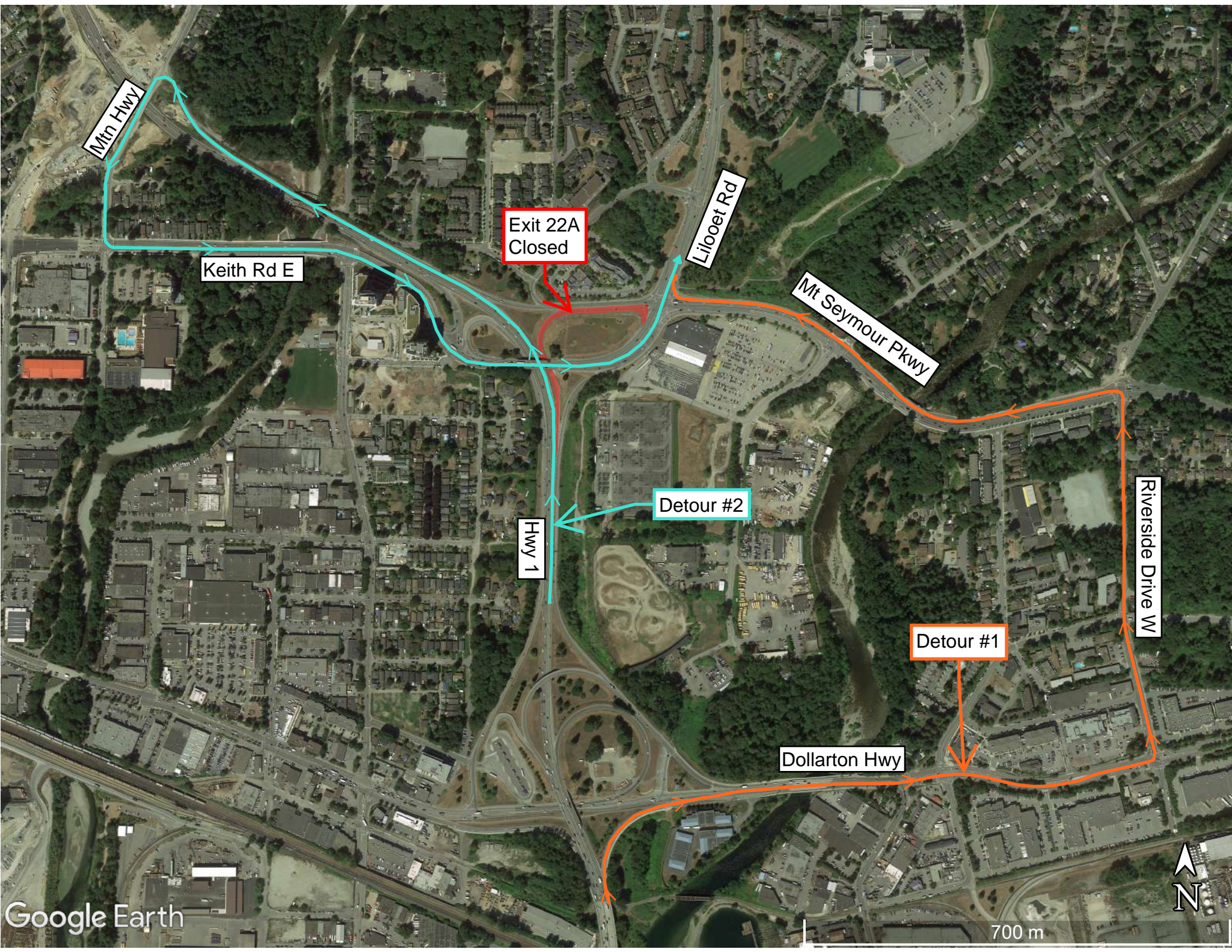
We appreciate your patience while we complete this important work.

Sincerely,

Lafarge Canada Inc.

A handwritten signature in blue ink, appearing to read 'Gord Bird', is placed over a light yellow rectangular background.

Gord Bird  
Project Manager  
[Gord.Bird@LafargeHolcim.com](mailto:Gord.Bird@LafargeHolcim.com)  
604-880-4728



Mtn Hwy

Keith Rd E

Exit 22A  
Closed

Lillooet Rd

Mt Seymour Pkwy

Detour #2

Hwy 1

Detour #1

Dollarton Hwy

Riverside Drive W

